

## Part 9 Roundabouts

### 109 What is a roundabout

A *roundabout* is an intersection with:

- (a) one or more marked lanes, or lines of traffic, all of which are for the use of vehicles travelling in the same direction around a central traffic island; and
- (b) a *roundabout sign* at each entrance.

*Note 1* *Intersection*, *marked lane*, *traffic* and *traffic island* are defined in the dictionary.

*Note 2* Rule 322 (3) and (4) deal with the meaning of a traffic sign *at a place*.

Roundabout sign



### 110 Meaning of halfway around a roundabout

A driver leaves a roundabout *halfway around* the roundabout if the driver leaves the roundabout on a road that is straight ahead, or substantially straight ahead, from the road on which the driver enters the roundabout.

### 111 Entering a roundabout from a multi-lane road or a road with 2 or more lines of traffic travelling in the same direction

- (1) A driver entering a roundabout from a multi-lane road, or a road with 2 or more lines of traffic travelling in the same direction as the driver, must enter the roundabout in accordance with this rule.

Offence provision.

*Note* *Multi-lane road* is defined in the dictionary.

**Rule 111**

---

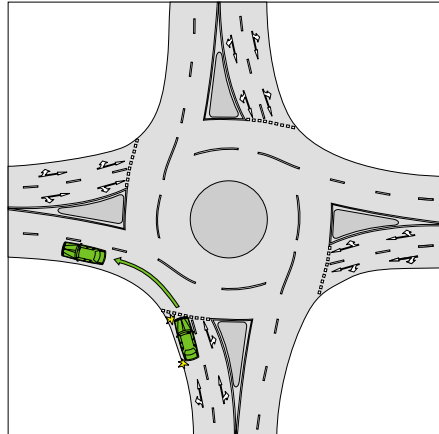
- (2) If the driver is to leave the roundabout less than halfway around it, the driver must enter the roundabout from the left marked lane or left line of traffic.

*Note* **Marked lane** is defined in the dictionary.

*Example*

Example 1

Leaving a roundabout less than halfway around it



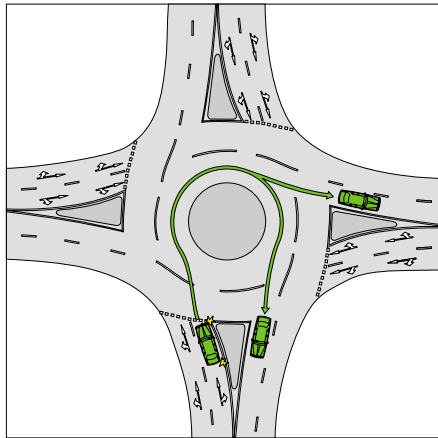
**Rule 111**

- (3) If the driver is to leave the roundabout more than halfway around it, the driver must enter the roundabout from the right marked lane or right line of traffic.

*Example*

Example 2

Leaving a roundabout more than halfway around it

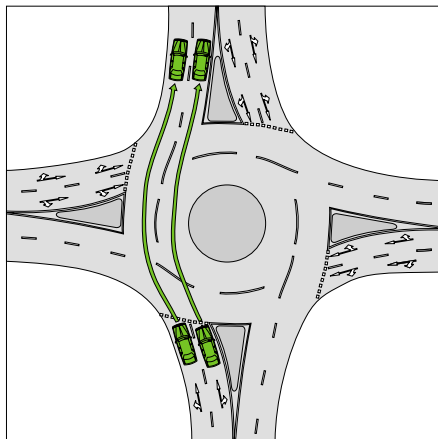


- (4) If the driver is to leave the roundabout halfway around it, the driver may enter the roundabout from any marked lane or line of traffic.

*Example*

Example 3

Leaving a roundabout halfway around it



**Rule 111**

---

- (5) Despite subrules (2) to (4), if the driver is entering the roundabout from a marked lane and there are traffic lane arrows applying to the lane, the driver must:
- (a) if the arrows indicate a single direction — drive in that direction after entering the roundabout; or
  - (b) if the arrows indicate 2 or more directions — drive in one of those directions after entering the roundabout.

*Note* **Traffic lane arrows** is defined in the dictionary.

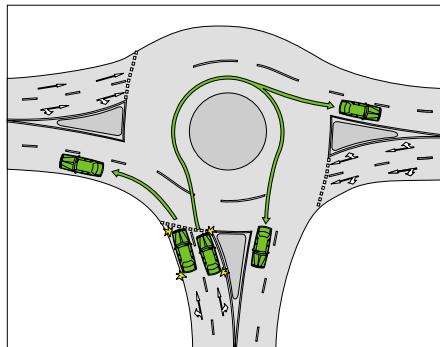
- (6) Subrule (3) does not apply to the rider of a bicycle or animal.

*Note* **Bicycle** is defined in the dictionary.

- (7) Subrule (5) does not apply to the rider of a bicycle or animal if the rider is to leave the roundabout more than halfway around it.

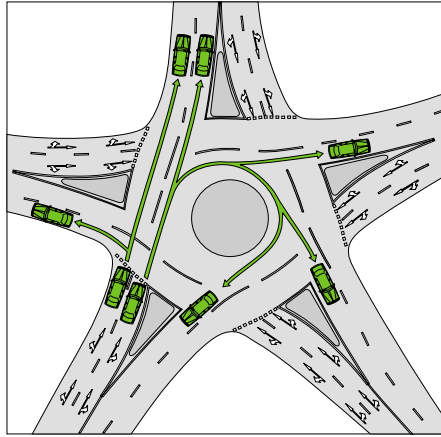
*Examples*

Example 4  
Roundabout with 3 entry points



**Rule 112**

Example 5  
Roundabout with 5 entry points



*Note 1 for examples 4 and 5* Rule 116 requires a driver to obey traffic lane arrows when driving in or leaving a roundabout.

*Note 2 for examples 4 and 5* The rules in Part 11 about driving in marked lanes, and moving from one marked lane or line of traffic, apply to a driver driving in a roundabout — see rules 146 to 148.

### **112 Giving a left change of direction signal when entering a roundabout**

- (1) This rule applies to a driver entering a roundabout if:
  - (a) the driver is to leave the roundabout at the first exit after entering the roundabout; and
  - (b) the exit is less than halfway around the roundabout.
- (2) The driver must give a left change of direction signal when the driver is entering the roundabout.

Offence provision.

*Note* **Left change of direction signal** is defined in the dictionary.

- (3) The driver must continue to give the change of direction signal until the driver has left the roundabout.

Offence provision.

**Rule 113**

---

- (4) This rule does not apply to a driver if the driver's vehicle is not fitted with direction indicator lights.

*Note* **Driver's vehicle** is defined in the dictionary.

**113 Giving a right change of direction signal when entering a roundabout**

- (1) This rule applies to a driver entering a roundabout if the driver is to leave the roundabout more than halfway around it.
- (2) The driver must give a right change of direction signal when the driver is entering the roundabout.

Offence provision.

*Note* **Right change of direction signal** is defined in the dictionary.

- (3) The driver must continue to give the change of direction signal while the driver is driving in the roundabout, unless:
- (a) the driver is changing marked lanes, or entering another line of traffic; or
- (b) the driver's vehicle is not fitted with direction indicator lights.

Offence provision.

*Note 1* **Driver's vehicle** and **marked lane** are defined in the dictionary.

*Note 2* Rule 117 deals with giving change of direction signals before changing marked lanes, or entering another line of traffic, in a roundabout.

**114 Giving way when entering or driving in a roundabout**

- (1) A driver entering a roundabout must give way to:
- (a) any vehicle in the roundabout; and
- (b) a tram that is entering or approaching the roundabout.

Offence provision.

*Note 1* **Tram** is defined in the dictionary.

*Note 2* For this rule, **give way** means the driver must slow down and, if necessary, stop to avoid a collision — see the definition in the dictionary.

**Rule 115**

---

- (2) A driver driving in a roundabout must give way to a tram that is in, entering or approaching the roundabout.

Offence provision.

- (3) In this rule:

**tram** includes a bus travelling along tram tracks.

*Note 1* **Bus** and **travelling along tram tracks** are defined in the dictionary.

*Note 2* For the give way rules applying to a driver moving from one marked lane or line of traffic to another marked lane or line of traffic, see rule 148.

### **115 Driving in a roundabout to the left of the central traffic island**

- (1) A driver driving in a roundabout must drive to the left of the central traffic island in the roundabout, unless subrule (2) or (3) applies to the driver.

Offence provision.

*Note* **Traffic island** is defined in the dictionary.

- (2) This subrule applies to a driver if:

- (a) the driver's vehicle is too large to drive in the roundabout without driving on the edge of the central traffic island; and
- (b) the driver can safely drive on the edge of the central traffic island.

*Note* **Driver's vehicle** is defined in the dictionary.

- (3) This subrule applies to a driver if:

- (a) the driver's vehicle is too large to drive in the roundabout without driving over the central traffic island; and
- (b) the central traffic island is designed to allow a vehicle of that kind to be driven over it.

**Rule 116**

---

**116 Obeying traffic lane arrows when driving in or leaving a roundabout**

If a driver is driving in a marked lane in a roundabout and there are traffic lane arrows applying to the lane, the driver must:

- (a) if the arrows indicate a single direction — drive in or leave the roundabout in that direction; or
- (b) if the arrows indicate 2 or more directions — drive in or leave the roundabout in one of those directions.

Offence provision.

*Note* **Marked lane** and **traffic lane arrows** are defined in the dictionary.

**117 Giving a change of direction signal when changing marked lanes or lines of traffic in a roundabout**

- (1) A driver driving in a roundabout must give a left change of direction signal before the driver changes marked lanes to the left, or enters a line of traffic to the left, in the roundabout, unless the driver's vehicle is not fitted with direction indicator lights.

Offence provision.

*Note* **Driver's vehicle** and **left change of direction signal** are defined in the dictionary.

- (2) A driver driving in a roundabout must give a right change of direction signal before the driver changes marked lanes to the right, or enters a line of traffic to the right, in the roundabout.

Offence provision.

*Note* **Right change of direction signal** is defined in the dictionary.

**118 Giving a left change of direction signal when leaving a roundabout**

- (1) If practicable, a driver driving in a roundabout must give a left change of direction signal when leaving the roundabout.

Offence provision.

*Note* **Left change of direction signal** is defined in the dictionary.

**Rule 119**

---

- (2) The driver must stop giving the change of direction signal as soon as the driver has left the roundabout.

Offence provision.

- (3) This rule does not apply to a driver if the driver's vehicle is not fitted with direction indicator lights.

*Note 1* **Driver's vehicle** is defined in the dictionary.

*Note 2* The rules in Part 11 about driving in marked lanes and moving from one marked lane or line of traffic to another marked lane or line of traffic apply to a driver leaving a roundabout — see rules 146 to 148.

### **119 Giving way by the rider of a bicycle or animal to a vehicle leaving a roundabout**

The rider of a bicycle or animal who is riding in the far left marked lane of a roundabout with 2 or more marked lanes, or the far left line of traffic in a roundabout with 2 or more lines of traffic, must give way to any vehicle leaving the roundabout.

Offence provision.

*Note 1* **Bicycle** and **marked lane** are defined in the dictionary, and **vehicle** is defined in rule 15.

*Note 2* For this rule, **give way** means the rider must slow down and, if necessary, stop to avoid a collision — see the definition in the dictionary.