

Part 7 Giving way

Note 1 The rules in this Part deal with giving way in most situations. In addition, other rules requiring a driver to give way include:

- making a U-turn — rule 38
- turning at traffic lights at an intersection — rule 62
- at an intersection with traffic lights that are not operating or only partly operating — rule 63
- turning at a flashing yellow traffic arrow at an intersection — rule 64
- at a marked foot crossing with a flashing yellow traffic light — rule 65
- entering and driving in a roundabout — rule 114
- by the rider of a bicycle or animal to a vehicle leaving a roundabout — rule 119
- at a *stop sign* at a level crossing — rule 121
- at a *give way sign* or give way line at a level crossing — rule 122
- moving from one marked lane to another marked lane, or from one line of traffic to another line of traffic — rule 148
- when lines of traffic merge into a single line of traffic — rule 149
- for pedestrians crossing the road near a stopped tram — rule 164.

Note 2 For the meaning of *left* and *right*, see rule 351 (1) and (2).

Division 1 Giving way at a stop sign, stop line, give way sign or give way line applying to the driver

Note For a driver, a reference in a rule in this Division to a traffic sign or road marking is a reference to a traffic sign or road marking applying to the driver — see rules 338 to 341.

67 Stopping and giving way at a stop sign or stop line at an intersection without traffic lights

- (1) A driver at an intersection with a *stop sign* or stop line, but without traffic lights, must stop and give way in accordance with this rule.

Offence provision.

Note 1 **Intersection** and **stop line** are defined in the dictionary. This rule applies also to T-intersections — see the definition of **intersection**.

Note 2 For this rule, **give way** means the driver must remain stationary until it is safe for the driver to proceed — see the definition in the dictionary.

Note 3 Part 6 deals with stopping and giving way at an intersection with traffic lights.

Note 4 This rule only applies to a driver turning left using a slip lane if the *stop sign* or stop line applies to the slip lane — see Part 20, Divisions 2 and 3, especially rules 330 and 345.

- (2) The driver must stop at the stop line or, if there is no stop line, the driver must stop as near as practicable to, but before entering, the intersection.

Note **Enter** is defined in the dictionary.

- (3) The driver must give way to a vehicle in, entering or approaching the intersection except:
 - (a) an oncoming vehicle turning right at the intersection if a *stop sign*, stop line, *give way sign* or give way line applies to the driver of the oncoming vehicle; or

Rule 67

- (b) a vehicle turning left at the intersection using a slip lane;
or
- (c) a vehicle making a U-turn.

Note Give way line, oncoming vehicle, slip lane and U-turn are defined in the dictionary.

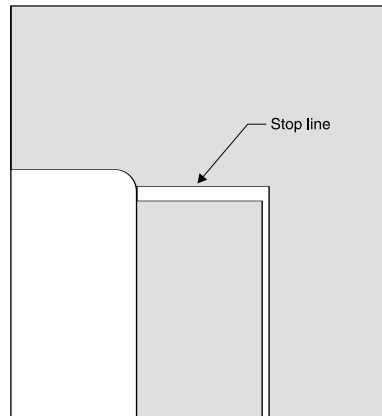
- (4) If the driver is turning left or right or making a U-turn, the driver must also give way to any pedestrian at or near the intersection on the road, or part of the road, the driver is entering.
- (5) For this rule, an oncoming vehicle travelling through a T-intersection on the continuing road is taken not to be turning.

Stop sign

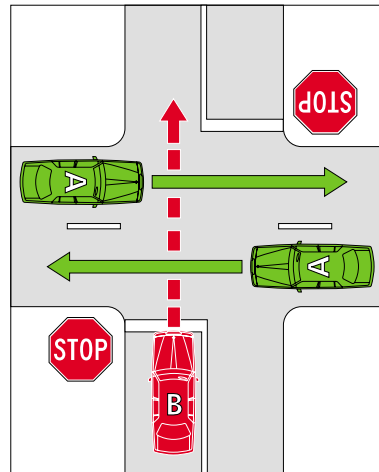


Examples

Example 1
Stop line

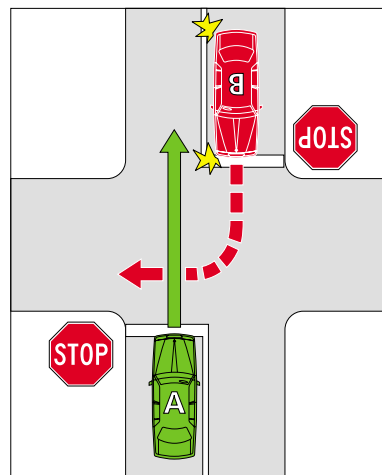


Example 2
Stopping and giving way at a stop sign to vehicles on the left and right

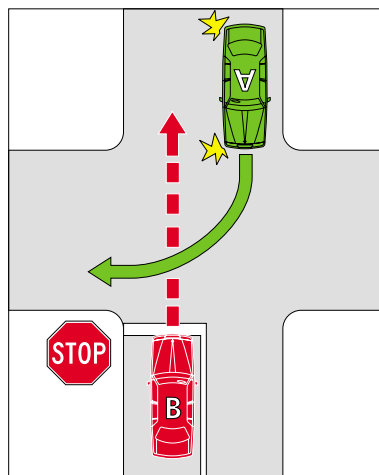


In example 2, vehicle B must stop and give way to each vehicle A.

Example 3
Stopping and giving way at a stop sign to an oncoming vehicle at a stop sign



Example 4
Stopping and giving way at a stop sign to an oncoming vehicle that is not at a stop sign or give way sign



In examples 3 and 4, vehicle B must stop and give way to vehicle A.

Rule 68

68 Stopping and giving way at a stop sign or stop line at other places

- (1) A driver approaching or at a place (except an intersection, children's crossing, level crossing, or a place with twin red lights) with a *stop sign* or stop line must stop and give way in accordance with this rule.

Offence provision.

Examples

- 1 A *stop sign* at a break in a dividing strip dividing the part of the road used by the main body of moving vehicles from a service road.
- 2 A *stop sign* on an exit from a carpark where the exit joins the road.

Note 1 **Children's crossing** is defined in rule 80, **intersection**, **stop line** and **twin red lights** are defined in the dictionary, and **level crossing** is defined in rule 120.

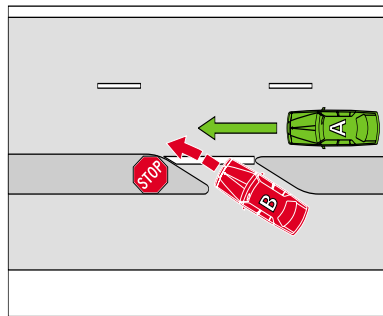
Note 2 For this rule, **give way** means the driver must remain stationary until it is safe for the driver to proceed — see the definition in the dictionary.

Note 3 For the stopping and giving way rules applying to a driver at an intersection or level crossing with a *stop sign* or stop line, see rule 67 (intersections) and rule 121 (level crossings). Rule 80 deals with stopping at a stop line at a children's crossing.

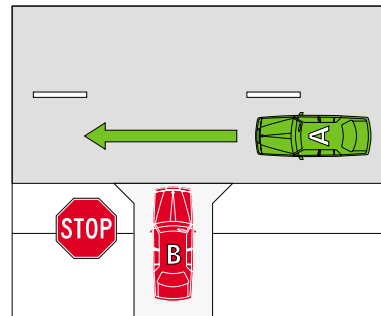
- (2) The driver must stop at the stop line or, if there is no stop line, the driver must stop as near as practicable to, but before, the *stop sign*.
- (3) The driver must give way to any vehicle or pedestrian at or near the *stop sign*.

Examples

Example 1
Stopping and giving way at a stop sign at a break in a dividing strip



Example 2
Stopping and giving way at a stop sign where a carpark exit joins a road



In each example, vehicle B must stop and give way to vehicle A.

69 Giving way at a give way sign or give way line at an intersection

- (1) A driver at an intersection with a *give way sign* or give way line must give way in accordance with this rule.

Offence provision.

Note 1 Give way line and intersection are defined in the dictionary. This rule applies also to T-intersections — see the definition of *intersection*.

Note 2 For this rule, *give way* means the driver must slow down and, if necessary, stop to avoid a collision — see the definition in the dictionary.

- (2) The driver must give way to a vehicle in, entering or approaching the intersection except:
- (a) an oncoming vehicle turning right at the intersection if a *stop sign*, stop line, *give way sign* or give way line applies to the driver of the oncoming vehicle; or
 - (b) a vehicle turning left at the intersection using a slip lane; or
 - (c) a vehicle making a U-turn.

Note Enter, oncoming vehicle, slip lane, stop line and U-turn are defined in the dictionary.

Rule 69

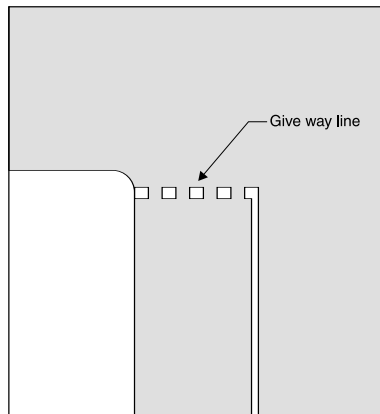
- (3) If the driver is turning left or right or making a U–turn, the driver must also give way to any pedestrian at or near the intersection on the road, or part of the road, the driver is entering.
- (4) For this rule, an oncoming vehicle travelling through a T-intersection on the continuing road is taken not to be turning.

Give way sign

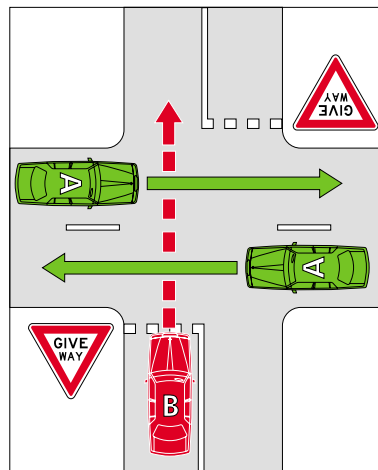


Examples

Example 1
Give way line



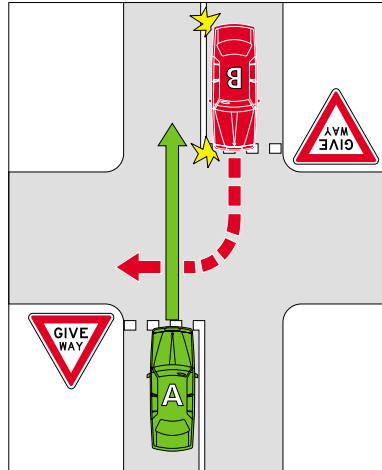
Example 2
Giving way at a give way sign to vehicles on the left and right



In example 2, vehicle B must give way to each vehicle A.

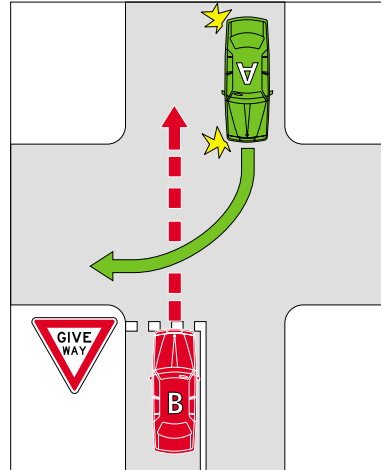
Example 3

Giving way at a give way sign to an oncoming vehicle at a give way sign



Example 4

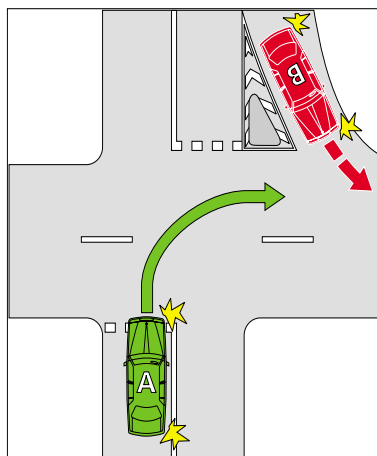
Giving way at a give way sign to an oncoming vehicle that is not at a stop sign or give way sign



In examples 3 and 4, vehicle B must give way to vehicle A.

Example 5

Driver turning right at a give way line does not have to give way to a vehicle turning left using a slip lane



In example 5, vehicle B must give way to vehicle A.

Rule 70

70 Giving way at a give way sign at a bridge or length of narrow road

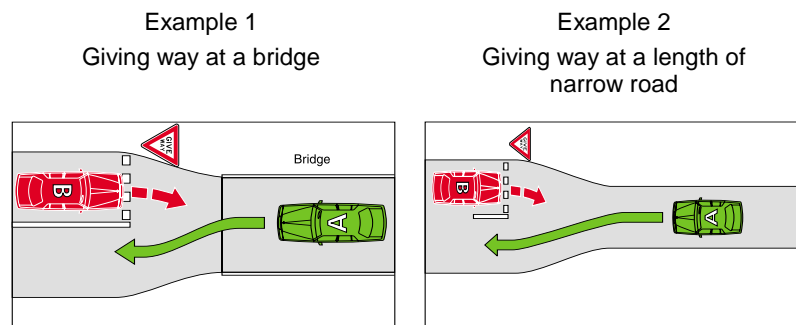
A driver approaching a bridge or length of narrow road with a *give way sign* must give way to any oncoming vehicle that is on the bridge or length of road when the driver reaches the sign.

Offence provision.

Note 1 **Oncoming vehicle** is defined in the dictionary.

Note 2 For this rule, **give way** means the driver must slow down and, if necessary, stop to avoid a collision — see the definition in the dictionary.

Examples



In each example, vehicle B must give way to vehicle A.

71 Giving way at a give way sign or give way line at other places

- (1) A driver approaching or at a place (except an intersection, bridge or length of narrow road, level crossing, or a place with twin red lights) with a *give way sign* or give way line must give way in accordance with this rule.

Offence provision.

Examples

- 1 A *give way sign* at a break in a dividing strip dividing the part of the road used by the main body of moving vehicles from a service road.
- 2 A *give way sign* on a road at a place where a bicycle path meets the road.

Rule 71

Note 1 **Give way line, intersection** and **twin red lights** are defined in the dictionary, and **level crossing** is defined in rule 120.

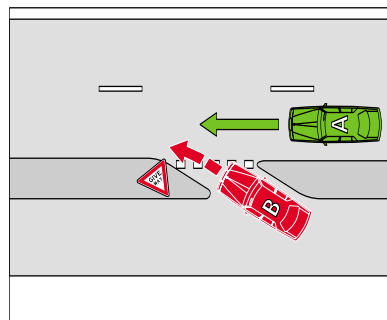
Note 2 For this rule, **give way** means the driver must slow down and, if necessary, stop to avoid a collision — see the definition in the dictionary.

Note 3 For the give way rules applying to a driver at an intersection, bridge or length of narrow road, or level crossing, with a *give way sign* or give way line, see rule 69 (intersections), rule 70 (bridges and lengths of narrow road) and rule 122 (level crossings).

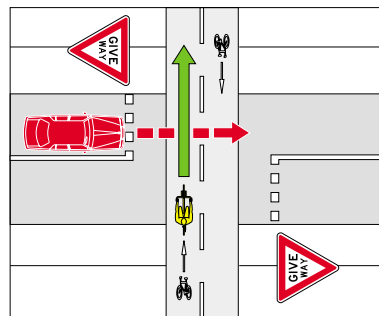
- (2) The driver must give way to any vehicle or pedestrian at or near the *give way sign* or give way line.

Examples

Example 1
Giving way at a give way sign at a break in a dividing strip



Example 2
Giving way at a give way sign where a bicycle path meets a road



In example 1, vehicle B must give way to vehicle A.

In example 2, the motor vehicle must give way to the bicycle.

Part 7	Giving way
Division 2	Giving way at an intersection without traffic lights or a stop sign, stop line, give way sign or give way line applying to the driver

Rule 72

Division 2 Giving way at an intersection without traffic lights or a stop sign, stop line, give way sign or give way line applying to the driver

Note For a driver, a reference in a rule in this Division to a traffic sign or road marking is a reference to a traffic sign or road marking applying to the driver — see rules 338 to 341.

72 Giving way at an intersection (except a T-intersection or roundabout)

- (1) A driver at an intersection (except a T-intersection or roundabout) without traffic lights or a *stop sign*, stop line, *give way sign* or give way line, must give way in accordance with this rule.

Offence provision.

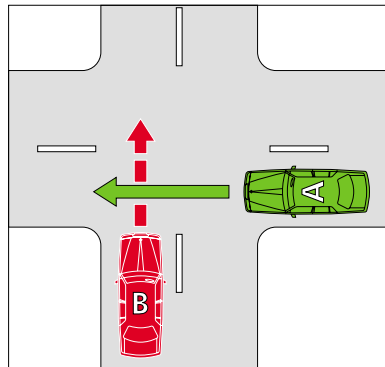
Note 1 *Give way line*, *intersection*, *stop line*, *T-intersection* and *traffic lights* are defined in the dictionary, and *roundabout* is defined in rule 109.

Note 2 For this rule, *give way* means the driver must slow down and, if necessary, stop to avoid a collision — see the definition in the dictionary.

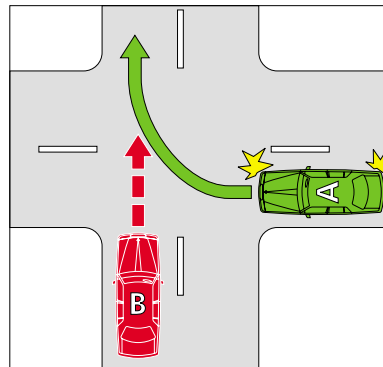
- (2) If the driver is going straight ahead, the driver must give way to any vehicle approaching from the right, unless a *stop sign*, stop line, *give way sign* or give way line applies to the driver of the approaching vehicle.

Examples

Example 1
Driver going straight ahead giving way to a vehicle on the right that is going straight ahead



Example 2
Driver going straight ahead giving way to a vehicle on the right that is turning right



In each example, vehicle B must give way to vehicle A.

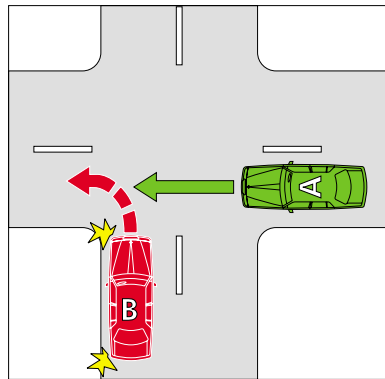
Note ***Straight ahead*** is defined in the dictionary.

- (3) If the driver is turning left (except if the driver is using a slip lane), the driver must give way to:
- (a) any vehicle approaching from the right, unless a *stop sign*, stop line, *give way sign* or give way line applies to the driver of the approaching vehicle; and
 - (b) any pedestrian at or near the intersection on the road the driver is entering.

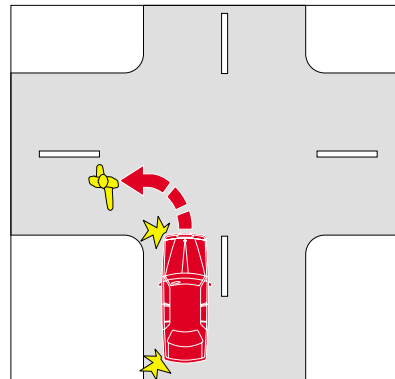
Rule 72

Examples

Example 3
Driver turning left giving way to a vehicle on the right that is going straight ahead



Example 4
Driver turning left giving way to a pedestrian on the road the driver is entering



In example 3, vehicle B must give way to vehicle A.

In example 4, the vehicle must give way to the pedestrian.

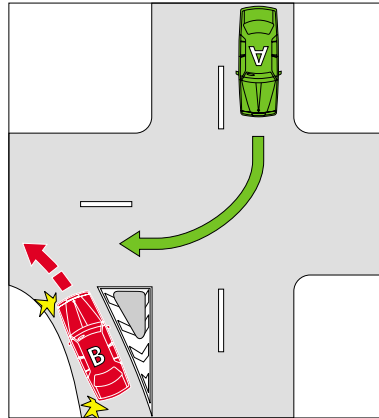
Note **Slip lane** is defined in the dictionary.

- (4) If the driver is turning left using a slip lane, the driver must give way to:
- (a) any vehicle approaching from the right or turning right at the intersection into the road the driver is entering (except a vehicle making a U–turn at the intersection); and
 - (b) any pedestrian on the slip lane.

Example

Example 5

Driver turning left using a slip lane giving way to a vehicle that is turning right into the road the driver is entering



In this example, vehicle B must give way to vehicle A.

- (5) If the driver is turning right, the driver must give way to:
- (a) any vehicle approaching from the right, unless a *stop sign*, stop line, *give way sign* or give way line applies to the driver of the approaching vehicle; and
 - (b) any oncoming vehicle that is going straight ahead or turning left at the intersection, unless:
 - (i) a *stop sign*, stop line, *give way sign* or give way line applies to the driver of the oncoming vehicle; or
 - (ii) the oncoming vehicle is turning left using a slip lane; and
 - (c) any pedestrian at or near the intersection on the road the driver is entering.

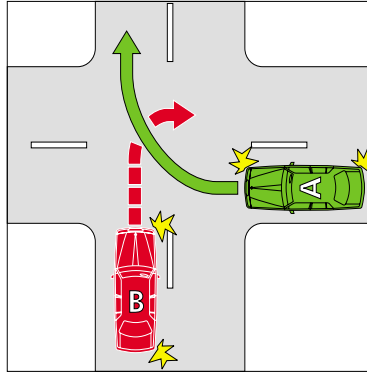
Note **Oncoming vehicle** is defined in the dictionary.

Rule 72

Examples

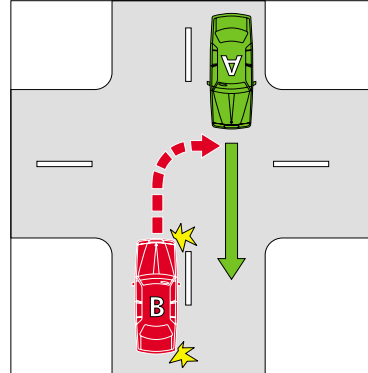
Example 6

Driver turning right giving way to a vehicle on the right that is turning right into the road the driver is leaving



Example 7

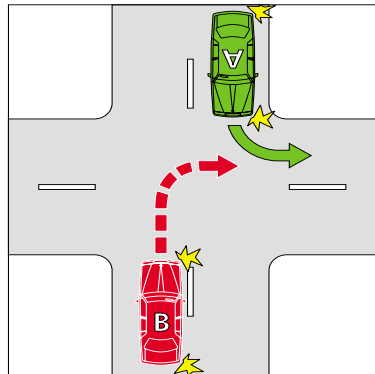
Driver turning right giving way to an oncoming vehicle that is going straight ahead on the road the driver is leaving



In examples 6 and 7, vehicle B must give way to vehicle A.

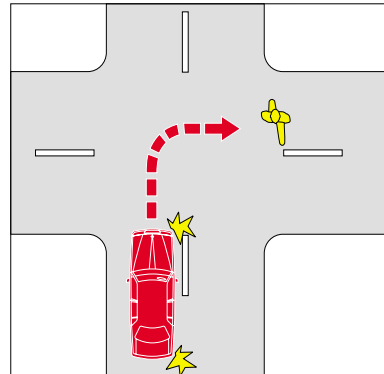
Example 8

Driver turning right giving way to an oncoming vehicle that is turning left into the road the driver is entering



Example 9

Driver turning right giving way to a pedestrian on the road the driver is entering



In example 8, vehicle B must give way to vehicle A.

In example 9, the vehicle must give way to the pedestrian.

73 Giving way at a T-intersection

- (1) A driver at a T-intersection without traffic lights or a *stop sign*, *stop line*, *give way sign* or *give way line*, must give way in accordance with this rule.

Offence provision.

Note 1 Give way line, stop line, T-intersection and traffic lights are defined in the dictionary.

Note 2 For this rule, *give way* means the driver must slow down and, if necessary, stop to avoid a collision — see the definition in the dictionary.

Note 3 Rule 75 (1) (d) requires a driver at a T-intersection to give way when crossing the continuing road to enter a road-related area or adjacent land.

- (2) If the driver is turning left (except if the driver is using a slip lane) or right from the terminating road into the continuing road, the driver must give way to:
- (a) any vehicle travelling on the continuing road; and
 - (b) any pedestrian on the continuing road at or near the intersection.

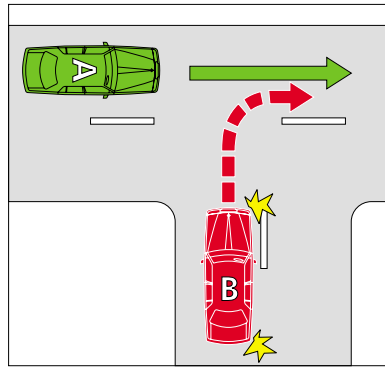
Note Continuing road, slip lane and terminating road are defined in the dictionary.

Rule 73

Examples

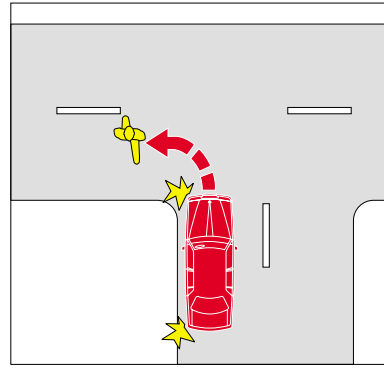
Example 1

Driver turning right from the terminating road giving way to a vehicle on the continuing road



Example 2

Driver turning left (except if the driver is using a slip lane) from the terminating road giving way to a pedestrian on the continuing road



In example 1, vehicle B must give way to vehicle A.

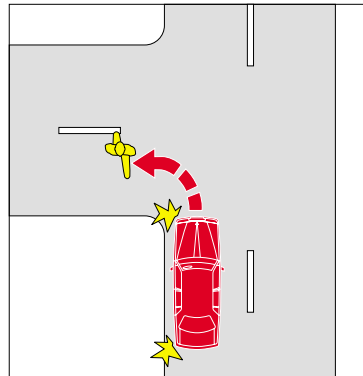
In example 2, the vehicle must give way to the pedestrian.

- (3) If the driver is turning left from the terminating road into the continuing road using a slip lane, the driver must give way to:
 - (a) any vehicle travelling on the continuing road; and
 - (b) any pedestrian on the slip lane.
- (4) If the driver is turning left (except if the driver is using a slip lane) from the continuing road into the terminating road, the driver must give way to any pedestrian on the terminating road at or near the intersection.

Example

Example 3

Driver turning left (except if the driver is using a slip lane) from the continuing road giving way to a pedestrian on the terminating road



In this example, the vehicle must give way to the pedestrian.

- (5) If the driver is turning from the continuing road into the terminating road using a slip lane, the driver must give way to:
 - (a) any vehicle approaching from the right; and
 - (b) any pedestrian on the slip lane.
- (6) If the driver is turning right from the continuing road into the terminating road, the driver must give way to:
 - (a) any oncoming vehicle that is travelling through the intersection on the continuing road or turning left at the intersection; and
 - (b) any pedestrian on the terminating road at or near the intersection.

Note **Oncoming vehicle** is defined in the dictionary.

- (7) In this rule:
turning left from the continuing road into the terminating road, for a driver, includes, where the continuing road curves to the right at a T-intersection, leaving the continuing road to proceed straight ahead onto the terminating road.

Rule 73

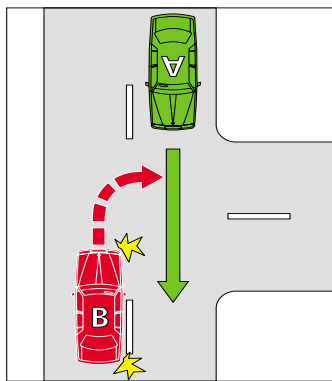
turning right from the continuing road into the terminating road, for a driver, includes, where the continuing road curves to the left at a T-intersection, leaving the continuing road to proceed straight ahead onto the terminating road.

Note **Straight ahead** is defined in the dictionary.

Examples

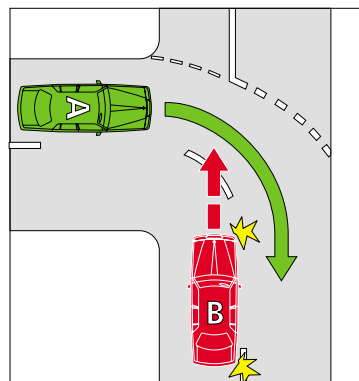
Example 4

Driver turning right from the continuing road giving way to an oncoming vehicle travelling through the intersection on the continuing road



Example 5

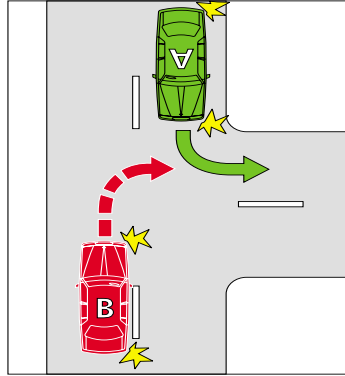
Driver leaving the continuing road to proceed straight ahead on the terminating road giving way to a vehicle travelling through the intersection on the continuing road



Example 5 shows a T-intersection where the continuing road (which is marked with broken white lines) goes around a corner. Vehicle B is leaving the continuing road to enter the terminating road. In examples 4 and 5, vehicle B must give way to vehicle A.

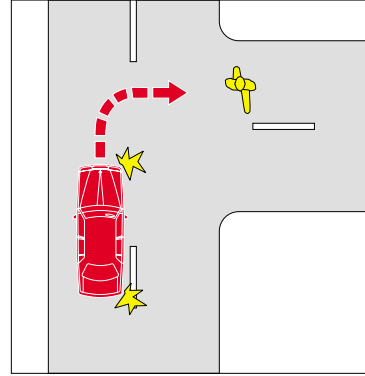
Example 6

Driver turning right from the continuing road giving way to an oncoming vehicle turning left from the continuing road



Example 7

Driver turning right from the continuing road giving way to a pedestrian on the terminating road



In example 6, vehicle B must give way to vehicle A.

In example 7, the vehicle must give way to the pedestrian.

Division 3 Entering or leaving road-related areas and adjacent land

74 Giving way when entering a road from a road-related area or adjacent land

- (1) A driver entering a road from a road-related area, or adjacent land, without traffic lights or a *stop sign*, stop line, *give way sign* or give way line must give way to:
- (a) any vehicle travelling on the road or turning into the road (except a vehicle turning right into the road from a road-related area or adjacent land); and
 - (b) any pedestrian on the road; and
 - (c) any vehicle or pedestrian on any road-related area that the driver crosses to enter the road; and
 - (d) for a driver entering the road from a road-related area — any pedestrian on the road-related area.

Offence provision.

Note 1 **Adjacent land**, *give way line*, *stop line* and *traffic lights* are defined in the dictionary, and **road-related area** is defined in rule 13.

Note 2 Adjacent land or a road-related area can include a driveway, service station or shopping centre — see the definitions of **adjacent land** and **road-related area**. Some shopping centres may include roads — see the definition of **road** in rule 12.

Note 3 Part 6 applies to the driver if there are traffic lights. Rule 68 applies to the driver if there is a *stop sign* or stop line, and rule 71 applies to the driver if there is a *give way sign* or give way line.

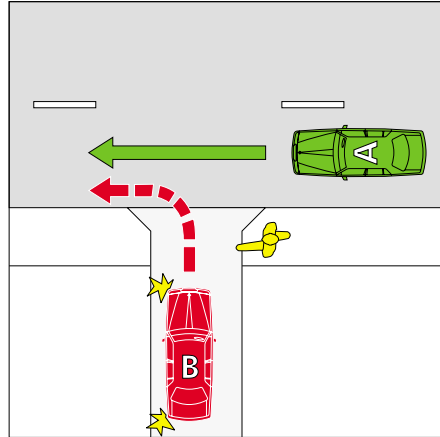
Note 4 For this rule, **give way** means the driver must slow down and, if necessary, stop to avoid a collision — see the definition in the dictionary.

- (2) In this rule:
road does not include a road-related area.

Note A **road-related area** includes any shoulder of a road — see rule 13.

Example

Driver entering a road from a road-related area giving way to a pedestrian on the footpath and a vehicle on the road



In this example, vehicle B must give way to the pedestrian on the footpath and to vehicle A.

75 Giving way when entering a road-related area or adjacent land from a road

- (1) A driver entering a road-related area or adjacent land from a place on a road without traffic lights or a *stop sign*, stop line, *give way sign* or give way line must give way to:
 - (a) any pedestrian on the road; and
 - (b) any vehicle or pedestrian on any road-related area that the driver crosses or enters; and
 - (c) if the driver is turning right from the road — any oncoming vehicle on the road that is going straight ahead or turning left; and
 - (d) if the road the driver is leaving ends at a T-intersection opposite the road-related area or adjacent land and the driver is crossing the continuing road — any vehicle on the continuing road.

Offence provision.

Note 1 *Adjacent land*, *continuing road*, *give way line*, *oncoming vehicle*, *stop line*, *straight ahead*, *T-intersection* and *traffic lights* are defined in the dictionary, and *road-related area* is defined in rule 13.

Rule 75

Note 2 Adjacent land or a road-related area can include a driveway, service station or shopping centre — see the definitions of **adjacent land** and **road-related area**. Some shopping centres may include roads — see the definition of **road** in rule 12.

Note 3 For this rule, **give way** means the driver must slow down and, if necessary, stop to avoid a collision — see the definition in the dictionary.

Note 4 Part 6 applies to the driver if there are traffic lights. Rule 68 applies to the driver if there is a *stop sign* or stop line, and rule 71 applies to the driver if there is a *give way sign* or give way line.

(2) In this rule:

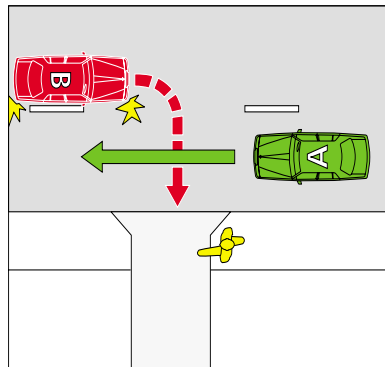
road does not include a road-related area.

Note A **road-related area** includes any shoulder of a road — see rule 13.

Examples

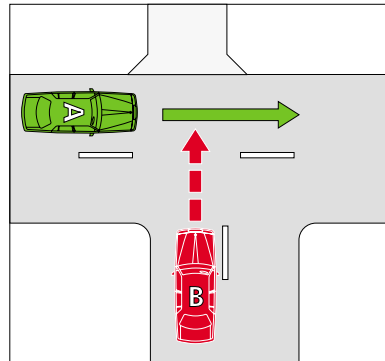
Example 1

Driver turning right from a road into a road-related area giving way to an oncoming vehicle that is going straight ahead and to a pedestrian on the footpath



Example 2

Driver crossing a continuing road at a T-intersection to enter a road-related area giving way to a vehicle on the continuing road



In each example, vehicle B must give way to vehicle A. In example 1, vehicle B must also give way to the pedestrian on the footpath.

Division 4 Keeping clear of and giving way to particular vehicles

76 Keeping clear of trams travelling in tram lanes etc

- (1) A driver must not move into the path of an approaching tram travelling in a tram lane, or on tram tracks marked along the left side of the tracks by a broken or continuous yellow line parallel to the tracks.

Offence provision.

Note **Approaching**, **left**, **tram** and **tram tracks** are defined in the dictionary, and **tram lane** is defined in rule 155.

- (2) If a driver is in the path of an approaching tram travelling in a tram lane, or on tram tracks marked along the left side of the tracks by a broken or continuous yellow line parallel to the tracks, the driver must move out of the path of the tram as soon as the driver can do so safely.

Offence provision.

- (3) In this rule:

tram includes a bus travelling along tram tracks.

Note **Bus** and **travelling along tram tracks** are defined in the dictionary.

77 Giving way to buses

- (1) A driver driving on a length of road in a built-up area, in the left lane or left line of traffic, must give way to a bus in front of the driver if:
- (a) the bus has stopped, or is moving slowly, at the far left side of the road, on a shoulder of the road, or in a bus-stop bay; and
 - (b) the bus displays a *give way to buses sign* and the right direction indicator lights of the bus are operating; and
 - (c) the bus is about to enter or proceed in the lane or line of traffic in which the driver is driving.

Offence provision.

Rule 77

Note 1 **Built-up area**, **bus** and **length** of road are defined in the dictionary, **left lane** and **left line of traffic** are defined in subrule (2), and **shoulder** is defined in rule 12.

Note 2 For this rule, **give way** means the driver must slow down and, if necessary, stop to avoid a collision — see the definition in the dictionary.

Note 3 The driver of the bus must give the change of direction signal for long enough to give sufficient warning to other drivers and pedestrians — see rule 48 (2) and (3).

Note 4 Under rule 87 (1), a driver entering a marked lane, or a line of traffic, from the side of the road must give way to any vehicle travelling in the lane or line of traffic. However, the driver of a public bus does not have to give way to a vehicle if the vehicle is required to give way to the bus under this rule and it is safe for the bus to enter the lane, or line of traffic, in which the other vehicle is travelling — see rule 87 (2).

(2) In this rule:

left lane, of a road, means:

- (a) the marked lane nearest to the far left side of the road (the **first lane**) or, if the first lane is a bicycle lane, the marked lane next to the first lane; or
- (b) if there is an obstruction in the first lane (for example, a parked car or roadworks) and the first lane is not a bicycle lane — the marked lane next to the first lane.

left line of traffic, for a road, means the line of traffic nearest to the far left side of the road.

Note **Marked lane** and **obstruction** are defined in the dictionary, and **bicycle lane** is defined in rule 153.

Give way to buses sign



Note for diagram This sign is displayed on buses.

78 Keeping clear of police and emergency vehicles

- (1) A driver must not move into the path of an approaching police or emergency vehicle that is displaying a flashing blue or red light (whether or not it is also displaying other lights) or sounding an alarm.

Offence provision.

Note **Approaching, emergency vehicle** and **police vehicle** are defined in the dictionary.

- (2) If a driver is in the path of an approaching police or emergency vehicle that is displaying a flashing blue or red light (whether or not it is also displaying other lights) or sounding an alarm, the driver must move out of the path of the vehicle as soon as the driver can do so safely.

Offence provision.

- (3) This rule applies to the driver despite any other rule of the Australian Road Rules.

79 Giving way to police and emergency vehicles

- (1) A driver must give way to a police or emergency vehicle that is displaying a flashing blue or red light (whether or not it is also displaying other lights) or sounding an alarm.

Offence provision.

Note 1 **Emergency vehicle** and **police vehicle** are defined in the dictionary.

Note 2 For this rule, **give way** means:

- (a) if the driver is stopped — remain stationary until it is safe to proceed;
or
(b) in any other case — slow down and, if necessary, stop to avoid a collision;
— see the definition in the dictionary.

- (2) This rule applies to the driver despite any other rule that would otherwise require the driver of a police or emergency vehicle to give way to the driver.

Division 5 Crossings and shared zones

80 Stopping at a children's crossing

- (1) A driver approaching a children's crossing must drive at a speed at which the driver can, if necessary, stop safely before the crossing.

Offence provision.

Note **Children's crossing** is defined in subrule (6).

- (2) A driver approaching or at a children's crossing must stop at the stop line at the crossing if:
- (a) a *hand-held stop sign* is displayed at the crossing; or
 - (b) a pedestrian is on or entering the crossing.

Offence provision.

Note 1 **Stop line** is defined in the dictionary.

Note 2 Rule 322 (3) and (4) deal with the meaning of a traffic control device **at** a place.

- (3) If a driver stops at a children's crossing for a *hand-held stop sign*, the driver must not proceed until the holder of the sign:
- (a) no longer displays the sign towards the driver; or
 - (b) otherwise indicates that the driver may proceed.

Offence provision.

- (4) If a driver stops at a children's crossing for a pedestrian, the driver must not proceed until there is no pedestrian on or entering the crossing.

Offence provision.

- (5) For this rule, if a children's crossing extends across a road with a dividing strip, the part of the children's crossing on each side of the dividing strip is taken to be a separate children's crossing.

Note **Dividing strip** is defined in the dictionary.

- (6) A **children's crossing** is an area of a road:
- (a) at a place with stop lines marked on the road, and:
 - (i) children crossing flags; or
 - (ii) *children's crossing signs* and twin yellow lights; and
 - (b) indicated by:
 - (i) 2 red and white posts erected on each side of the road; or
 - (ii) 2 parallel continuous or broken lines on the road surface from one side of the road completely or partly across the road; and
 - (c) extending across the road between the posts or lines.

Note **Twin yellow lights** is defined in the dictionary.

Children crossing flag



Children's crossing sign



Hand-held stop signs



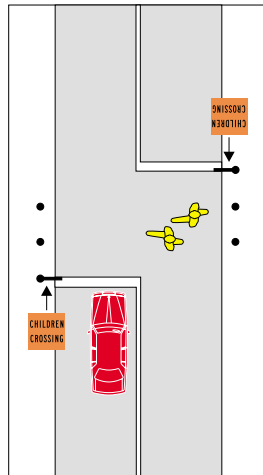
Note 1 for diagrams There is another permitted version of the *children's crossing sign* and a number of other permitted versions of the *hand-held stop signs* — see the diagrams in Schedule 3.

Note 2 for diagrams A *children's crossing sign* may have a different number on the sign — see rule 316 (4).

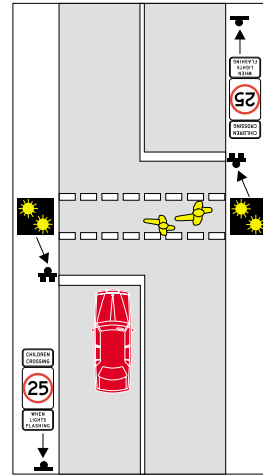
Rule 81

Examples

Example 1
Driver stopped at stop line for pedestrians on a children's crossing with children crossing flags



Example 2
Driver stopped at stop line for pedestrians on a children's crossing with children's crossing signs and twin yellow lights



In each of these examples, the driver must stop at the stop line because there are pedestrians on the children's crossing.

81 Giving way at a pedestrian crossing

- (1) A driver approaching a pedestrian crossing must drive at a speed at which the driver can, if necessary, stop safely before the crossing.

Offence provision.

Note **Pedestrian crossing** is defined in subrule (3).

- (2) A driver must give way to any pedestrian on a pedestrian crossing.

Offence provision.

Note For this rule, **give way** means the driver must slow down and, if necessary, stop to avoid a collision — see the definition in the dictionary.

- (3) A **pedestrian crossing** is an area of a road:
- (a) at a place that has a *pedestrian crossing sign* (with or without alternating flashing twin yellow lights); and
 - (b) indicated by white stripes on the road surface that are:
 - (i) approximately parallel to each other; and
 - (ii) from one side of the road completely or partly across the road.

Note 1 **Twin yellow lights** is defined in the dictionary.

Note 2 Rule 322 (3) and (4) deal with the meaning of a traffic sign *at* a place.

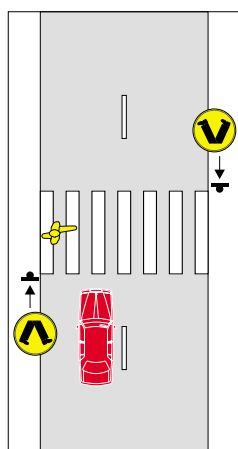
Pedestrian crossing sign



Examples

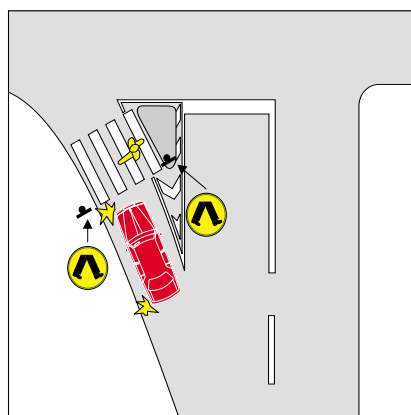
Example 1

Giving way to a pedestrian on a pedestrian crossing



Example 2

Giving way to a pedestrian on a pedestrian crossing at a slip lane



In each of these examples, the driver must give way to the pedestrian on the crossing.

Rule 82

82 Overtaking or passing a vehicle at a children's crossing or pedestrian crossing

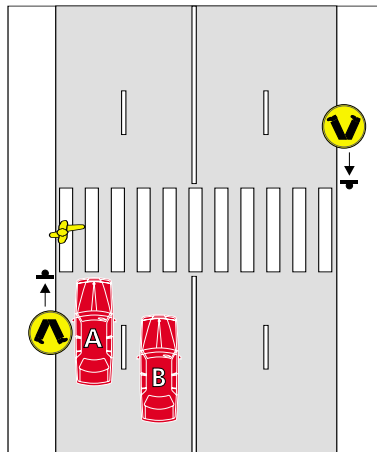
A driver approaching a children's crossing, or pedestrian crossing, must not overtake or pass a vehicle that is travelling in the same direction as the driver and is stopping, or has stopped, to give way to a pedestrian at the crossing.

Offence provision.

Note **Children's crossing** is defined in rule 80, **overtake** is defined in the dictionary, and **pedestrian crossing** is defined in rule 81.

Example

Driver not passing a vehicle that has stopped to give way to a pedestrian at a pedestrian crossing



In the example, vehicle A has stopped to give way to a pedestrian on the crossing. Vehicle B must not overtake or pass vehicle A.

83 Giving way to pedestrians in a shared zone

A driver driving in a shared zone must give way to any pedestrian in the zone.

Offence provision.

Note 1 **Shared zone** is defined in rule 24.

Note 2 For this rule, **give way** means the driver must slow down and, if necessary, stop to avoid a collision — see the definition in the dictionary.

Division 6 Other give way rules

84 Giving way when driving through a break in a dividing strip

- (1) If a driver drives through a break in a dividing strip that has no *stop sign*, stop line, *give way sign* or give way line, the driver must give way to:
- (a) any tram on the dividing strip; and
 - (b) any vehicle travelling on the part of the road the driver is entering (except a vehicle to which a *stop sign*, stop line, *give way sign*, or give way line, applies).

Offence provision.

Note 1 **Dividing strip**, **give way line**, **stop line** and **tram** are defined in the dictionary.

Note 2 Rule 68 applies to the driver if there is a *stop sign* or stop line, and rule 71 applies to the driver if there is a *give way sign* or give way line.

Note 3 For this rule, **give way** means the driver must slow down and, if necessary, stop to avoid a collision — see the definition in the dictionary.

- (2) In this rule:

tram includes a bus travelling along tram tracks.

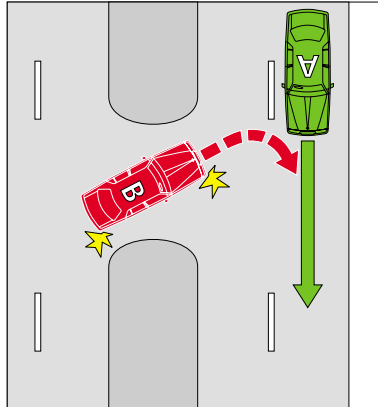
Note **Bus** and **travelling along tram tracks** are defined in the dictionary.

Rule 84

Examples

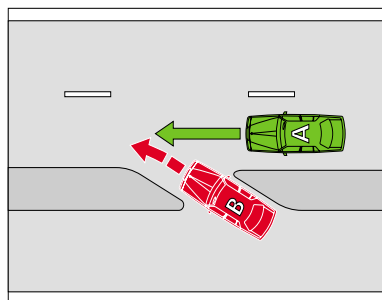
Example 1

Giving way when driving through a break in a median strip



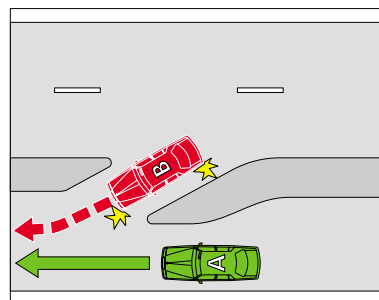
Example 2

Giving way when driving through a break in a dividing strip to leave a service road



Example 3

Giving way when driving through a break in a dividing strip to enter a service road



In each of the examples, vehicle B must give way to vehicle A.

Note to examples A median strip is a particular kind of dividing strip — see the definition of **median strip** in the dictionary.

85 Giving way on a painted island

A driver entering a turning lane from a painted island must give way to any vehicle:

- (a) in the turning lane; or
- (b) entering the turning lane from the marked lane, or line of traffic, immediately to the left of the turning lane.

Offence provision.

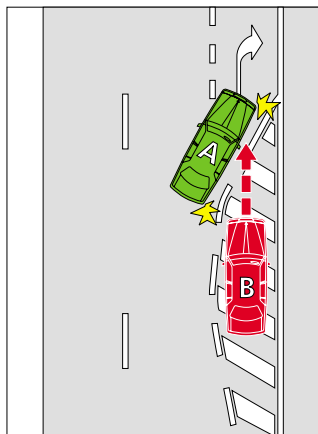
Note 1 **Marked lane**, **painted island** and **turning lane** are defined in the dictionary.

Note 2 Rule 138 deals with keeping off painted islands.

Note 3 For this rule, **give way** means the driver must slow down and, if necessary, stop to avoid a collision — see the definition in the dictionary.

Example

Driver entering a turning lane from a painted island giving way to a vehicle entering the turning lane from the marked lane immediately to the left of the turning lane



In the example, vehicle B must give way to vehicle A.

86 Giving way in median turning bays

- (1) A driver entering a median turning bay must give way to any oncoming vehicle already in the turning bay.

Offence provision.

Note 1 **Oncoming vehicle** is defined in the dictionary.

Rule 86

Note 2 For this rule, **give way** means the driver must slow down and, if necessary, stop to avoid a collision — see the definition in the dictionary.

(2) In this rule:

median turning bay means a marked lane, or the part of a marked lane:

- (a) to which a *median turning lane sign* applies; or
- (b) where traffic lane arrows applying to the lane indicate that vehicles travelling in opposite directions must turn right.

Note **Marked lane** and **traffic lane arrows** are defined in the dictionary.

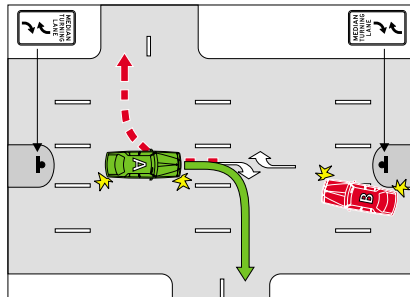
Median turning lane sign



Note for diagram There is another permitted version of the *median turning lane sign* — see the diagram in Schedule 3.

Example

Giving way in a median turning bay



In the example, vehicle B must give way to vehicle A.

87 Giving way when moving from a side or shoulder of the road or a median strip parking area

- (1) A driver entering a marked lane, or a line of traffic, from the far left or right side of a road, or from a shoulder of a road, must give way to any vehicle travelling in the lane or line of traffic.

Offence provision.

Note 1 **Marked lane** is defined in the dictionary, and **shoulder** is defined in rule 12.

Note 2 For subrule (1), **give way** means:

- (a) if the driver is stopped — remain stationary until it is safe to proceed;
or
(b) in any other case — slow down and, if necessary, stop to avoid a collision;
— see the definition in the dictionary.

- (2) However, the driver of a public bus does not have to give way to a vehicle if:
- (a) the driver of the vehicle is required to give way to the bus under rule 77; and
(b) it is safe for the bus to enter the lane or line of traffic in which the vehicle is driving.

Note 1 **Public bus** is defined in the dictionary.

Note 2 The bus must display a *give way to buses sign* and the right direction indicator lights of the bus must be operating — see rule 77.

- (3) A driver turning from a median strip parking area into a marked lane, or a line of traffic, must give way to any vehicle travelling in the lane or line of traffic.

Offence provision.

Note 1 **Median strip parking area** is defined in the dictionary.

Note 2 For subrule (3), **give way** means the driver must slow down and, if necessary, stop to avoid a collision — see the definition in the dictionary.