

Part 6 Traffic lights and twin red lights

Division 1 Obeying traffic lights

Note 1 **Traffic arrows** and **traffic lights** are defined in the dictionary. **Traffic arrows** are a traffic control device installed with traffic lights that are designed to show a traffic arrow, or 2 or more traffic arrows at different times — see the definition in the dictionary.

Note 2 A reference in a rule of this Part to a green, yellow or red traffic light or traffic arrow is a reference to a steady green, yellow or red traffic light or traffic arrow, unless otherwise stated in the rule — see rule 323.

Note 3 The rules dealing with T lights and B lights, which apply to drivers of trams and public buses, are in Part 17.

56 Stopping for a red traffic light or arrow

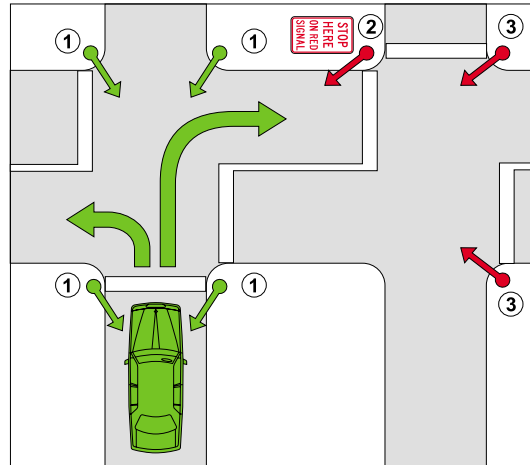
- (1) A driver approaching or at traffic lights showing a red traffic light must stop:
 - (a) if there is a stop line at or near the traffic lights — as near as practicable to, but before reaching, the stop line; or
 - (b) if there is a *stop here on red signal sign* at or near the traffic lights, but no stop line — as near as practicable to, but before reaching, the sign; or
 - (c) if there is no stop line or *stop here on red signal sign* at or near the traffic lights — as near as practicable to, but before reaching, the nearest or only traffic lights.

Offence provision.

Note **Red traffic light** and **stop line** are defined in the dictionary.

Example for subrule (1) (b)

Stopping at a stop here on red signal sign on a road
the driver is entering



In this example, the driver may go straight ahead, or turn right or left, if there is a green traffic light showing at 1. However, the driver must not go beyond the stop line or *stop here on red signal sign* at 2, if there is a red traffic light showing on the road the driver is entering (see 3).

- (2) A driver approaching or at traffic arrows showing a red traffic arrow who is turning in the direction indicated by the arrow must stop:
- (a) if there is a stop line at or near the traffic arrows — as near as practicable to, but before reaching, the stop line; or
 - (b) if there is a *stop here on red arrow sign* at or near the traffic arrows, but no stop line — as near as practicable to, but before reaching, the sign; or
 - (c) if there is no stop line or *stop here on red arrow sign* at or near the traffic arrows — as near as practicable to, but before reaching, the nearest or only traffic arrows.

Offence provision.

Note 1 **Red traffic arrow** is defined in the dictionary.

Note 2 This rule only applies to a driver turning left using a slip lane if the red traffic light or red traffic arrow applies to the slip lane — see Part 20, Divisions 2 and 3, especially rules 330 and 345.

Note 3 Rule 58 deals with when a driver does not have to stop for a red traffic light.

Note 4 The driver of a tram or a public bus does not have to stop at traffic lights showing a red traffic light if a white T light (for trams) or a white B light (for public buses) is also showing, or a white traffic arrow is showing and the driver is turning in the direction indicated by the arrow — see rules 278 and 285.

Stop here on red signal sign



Stop here on red arrow sign



Note for diagrams There is another permitted version of the *stop here on red signal sign* — see the diagram in Schedule 3.

57 Stopping for a yellow traffic light or arrow

- (1) This rule applies to:
 - (a) a driver approaching or at traffic lights showing a yellow traffic light; or
 - (b) a driver approaching or at traffic arrows showing a yellow traffic arrow who is turning in the direction indicated by the arrow.

Note **Yellow traffic arrow** and **yellow traffic light** are defined in the dictionary.

- (2) The driver must stop:
 - (a) if there is a stop line at or near the traffic lights or arrows and the driver can stop safely before reaching the stop line — as near as practicable to, but before reaching, the stop line; or
 - (b) if there is no stop line at or near the traffic lights or arrows and the driver can stop safely before reaching the traffic lights or arrows — as near as practicable to, but before reaching, the nearest or only traffic lights or arrows; or

Rule 58

- (c) if the traffic lights or arrows are at an intersection and the driver cannot stop safely in accordance with paragraph (a) or (b), but can stop safely before entering the intersection — before entering the intersection.

Offence provision.

Note **Enter**, **intersection** and **stop line** are defined in the dictionary.

- (3) If the traffic lights or arrows are at an intersection and the driver is not able to stop safely under subrule (2) and enters the intersection, the driver must leave the intersection as soon as the driver can do so safely.

Offence provision.

Note 1 **Intersection** does not include a road-related area — see the definition in the dictionary.

Note 2 This rule only applies to a driver turning left using a slip lane if the yellow traffic light or yellow traffic arrow applies to the slip lane — see Part 20, Divisions 2 and 3, especially rules 330 and 345.

Note 3 Rule 58 deals with when a driver does not have to stop at a yellow traffic light.

58 Exceptions to stopping for a red or yellow traffic light

- (1) A driver approaching or at traffic lights showing a red or yellow traffic light does not have to stop if a green traffic arrow is also showing and the driver is turning in the direction indicated by the arrow.

Note **Green traffic arrow**, **red traffic light** and **yellow traffic light** are defined in the dictionary.

- (2) A driver turning at an intersection with traffic lights who approaches or is at a red traffic light on the road that the driver is entering does not have to stop for that traffic light if there is no stop line or *stop here on red signal sign* at or near the traffic light.

Note **Intersection** and **stop line** are defined in the dictionary.

59 Proceeding through a red traffic light

- (1) If traffic lights at an intersection are showing a red traffic light, a driver must not enter the intersection.

Offence provision.

Note 1 *Enter, intersection and red traffic light* are defined in the dictionary.

Note 2 Rules 56 and 57 deal with stopping for a red or yellow traffic light. Rule 60 deals with proceeding through a red traffic arrow.

- (2) However, if the traffic lights are at an intersection with a *left turn on red after stopping sign* and the driver is turning left at the intersection, the driver may turn left after stopping.

Note Rule 62 deals with the give way rules applying to a driver turning left at an intersection after stopping at a *left turn on red after stopping sign*.

- (3) Also, subrule (1) does not apply to a driver if subrule 58 (1) applies to the driver.

Note Rule 58 deals with when a driver does not have to stop for a red traffic light.

Left turn on red after stopping sign



60 Proceeding through a red traffic arrow

If traffic arrows at an intersection are showing a red traffic arrow, and a driver is turning in the direction indicated by the arrow, the driver must not enter the intersection.

Offence provision.

Note 1 *Enter, intersection and red traffic arrow* are defined in the dictionary.

Rule 61

Note 2 Rules 56 and 57 deal with stopping for a red or yellow traffic arrow.

61 Proceeding when traffic lights or arrows at an intersection change to yellow or red

- (1) This rule applies to:
- (a) a driver at an intersection with traffic lights showing a green traffic light who has stopped after the stop line, *stop here on red signal sign*, or nearest or only traffic lights, at the intersection and is not making a hook turn at the intersection; or
 - (b) a driver at an intersection with traffic arrows showing a green traffic arrow who is turning in the direction indicated by the arrow and has stopped after the stop line, *stop here on red arrow sign*, or nearest or only traffic arrows, at the intersection.

Example

A driver may stop after the stop line at an intersection with traffic lights showing a green traffic light, and not proceed through the intersection, because traffic is congested.

Note 1 **Green traffic arrow, green traffic light, intersection** and **stop line** are defined in the dictionary.

Note 2 Hook turns are dealt with in rules 34 and 35.

- (2) If the traffic lights or arrows change to yellow or red while the driver is stopped and the driver has not entered the intersection, the driver must not enter the intersection.

Offence provision

Note **Enter** is defined in the dictionary.

- (3) However, if the traffic lights are at an intersection with a *left turn on red after stopping sign* and the driver is turning left at the intersection, the driver may turn left after stopping.

Note Rule 62 deals with the give way rules applying to a driver turning left at an intersection after stopping at a *left turn on red after stopping sign*.

- (4) Also, subrule (2) does not apply to a driver if subrule 58 (1) applies to the driver.

Note Rule 58 deals with when a driver does not have to stop for a red traffic light.

- (5) If the traffic lights or arrows change to yellow or red while the driver is stopped and the driver has entered the intersection, the driver must leave the intersection as soon as the driver can do so safely.

Offence provision.

Note **Intersection** does not include a road-related area — see the definition in the dictionary.

Division 2 Giving way at traffic lights

Note **Traffic lights** are defined in the dictionary.

62 Giving way when turning at an intersection with traffic lights

A driver turning at an intersection with traffic lights must give way to:

- (a) any pedestrian at or near the intersection who is on the road the driver is entering; and
- (b) if the driver is turning left at a *left turn on red after stopping sign* at the intersection:
 - (i) any vehicle approaching from the right, turning right at the intersection into the road the driver is entering or making a U-turn; and
 - (ii) any pedestrian at or near the intersection who is on the road the driver is leaving; and
- (c) if the driver is turning right — any oncoming vehicle that is going straight ahead or turning left at the intersection (except a vehicle turning left using a slip lane).

Offence provision.

Note 1 **Intersection, oncoming vehicle, slip lane, straight ahead** and **U-turn** are defined in the dictionary.

Note 2 For this rule, **give way** means the driver must remain stationary until it is safe to proceed — see the definition in the dictionary.

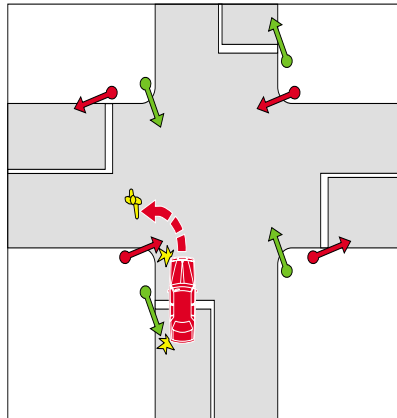
Note 3 Rule 322 (3) and (4) deal with the meaning of a traffic sign **at** an intersection.

Note 4 A driver turning left at a *left turn on red after stopping sign*, at an intersection with traffic lights showing a red traffic light, must stop in accordance with rule 56 (1) before making the turn.

Examples

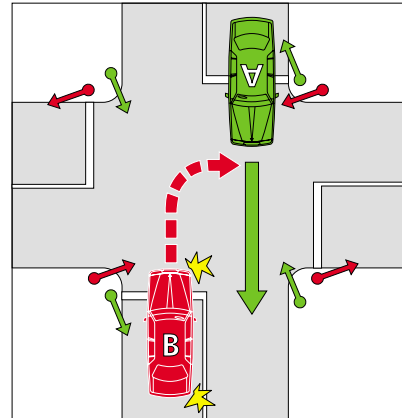
Example 1

Giving way to a pedestrian on the road the driver is entering



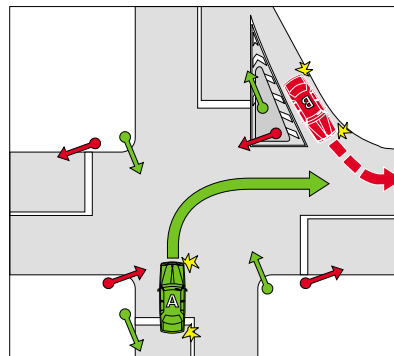
Example 2

Driver turning right giving way to an oncoming vehicle going straight ahead



Example 3

Driver turning right does not have to give way to an oncoming vehicle that is turning left into the road the driver is entering using a slip lane



In example 1, the vehicle must give way to the pedestrian.
In examples 2 and 3, vehicle B must give way to vehicle A.

Rule 63

63 Giving way at an intersection with traffic lights not operating or only partly operating

- (1) This rule applies to a driver at an intersection if traffic lights at the intersection are not operating, or the traffic lights are showing only a flashing yellow traffic light.

Note **Intersection** and **yellow traffic light** are defined in the dictionary.

- (2) If there is a *traffic light-stop sign* at the intersection, the driver must comply with rule 67 as if the sign were a *stop sign* at an intersection without traffic lights.

Offence provision.

Note 1 Rule 322 (3) and (4) deal with the meaning of a traffic sign **at** an intersection.

Note 2 Rule 67 deals with stopping and giving way at a *stop sign* or stop line at an intersection without traffic lights.

Note 3 There is no requirement under Division 1 of this Part for a driver to stop for a flashing yellow traffic light or traffic lights that are not operating.

- (3) If there is no *traffic light-stop sign* at the intersection, the driver must give way to vehicles and pedestrians at or near the intersection in accordance with rule 72 or 73 as if the intersection were an intersection without traffic lights, or a *stop sign*, stop line, *give way sign* or give way line.

Offence provision.

Note 1 **Give way line** and **stop line** are defined in the dictionary.

Note 2 Rules 72 and 73 deal with giving way at an intersection (except a roundabout) without traffic lights, or a *stop sign*, stop line, *give way sign* or give way line applying to the driver.

Traffic light-stop sign



64 Giving way at a flashing yellow traffic arrow at an intersection

A driver turning in the direction indicated by a flashing yellow traffic arrow at an intersection with traffic lights must give way to:

- (a) any vehicle travelling on the road the driver is entering; and
- (b) any pedestrian at or near the intersection who is on the road the driver is entering; and
- (c) if the driver is turning right — any oncoming vehicle that is going straight ahead or turning left at the intersection (except a vehicle turning left using a slip lane).

Offence provision.

Note 1 **Intersection**, **oncoming vehicle**, **slip lane**, **straight ahead** and **yellow traffic arrow** are defined in the dictionary.

Note 2 For this rule, **give way** means the driver must slow down and, if necessary, stop to avoid a collision — see the definition in the dictionary.

Note 3 There is no requirement under Division 1 of this Part for a driver to stop for a flashing yellow traffic arrow.

65 Giving way at a marked foot crossing (except at an intersection) with a flashing yellow traffic light

- (1) This rule applies to a driver approaching or at a marked foot crossing (except at or near an intersection) with a flashing yellow traffic light at the crossing.

Note **Intersection**, **marked foot crossing** and **yellow traffic light** are defined in the dictionary.

- (2) The driver must:
 - (a) give way to any pedestrian on the crossing; and
 - (b) not obstruct any pedestrian on the crossing; and

Rule 65

- (c) not overtake or pass a vehicle that is travelling in the same direction as the driver and is stopping, or has stopped, to give way at the crossing.

Offence provision.

Note 1 **Overtake** is defined in the dictionary.

Note 2 For subrule (2), **give way** means the driver must slow down and, if necessary, stop to avoid a collision — see the definition in the dictionary.

- (3) If there is no pedestrian on the crossing, and no other vehicle travelling in the same direction as the driver that is stopping, or has stopped, to give way at the crossing, the driver may proceed through the crossing.

Division 3 Twin red lights (except at level crossings)

66 Stopping for twin red lights (except at level crossings)

- (1) A driver approaching or at twin red lights on a road (except at a level crossing) must stop in accordance with subrules (2) and (3).

Offence provision.

Note 1 **Level crossing** is defined in rule 120, and **twin red lights** is defined in the dictionary.

Note 2 Rule 322 (1) and (2) deal with the meaning of a traffic control device **on** a road.

Note 3 Twin red lights are generally erected at bridges, ambulance stations, fire stations or level crossings. The rules about stopping at level crossings are in Part 10.

- (2) If there is a stop line at or near the lights and the driver can stop safely before reaching the stop line, the driver must stop as near as practicable to, but before reaching, the stop line.

Note **Stop line** is defined in the dictionary.

- (3) If there is no stop line at or near the lights and the driver can stop safely before reaching the lights, the driver must stop as near as practicable to, but before reaching, the lights.
- (4) If the driver stops for the lights, the driver must not proceed until the lights are not showing.

Offence provision.