

Part 12 Restrictions on stopping and parking

Division 1 General

Note 1 For the general rules about the application of traffic signs (including parking control signs), see Part 20, Divisions 2 and 3 especially rules 332 to 335 and 346. Parking control signs often include information about the times they apply and the types of vehicles to which they do not apply — see rules 317 and 318. For the meaning of abbreviations and symbols on parking control signs, see rule 347 and Schedule 1.

Note 2 **Park** and **stop** are defined in the dictionary.

165 Stopping in an emergency etc or to comply with another rule

It is a defence to the prosecution of a driver for an offence against a provision of this Part if:

- (a) the driver stops at a particular place, or in a particular way, to avoid a collision, and the driver stops for no longer than is necessary to avoid the collision; or
- (b) the driver stops at a particular place, or in a particular way, because the driver's vehicle is disabled, and the driver stops for no longer than is necessary for the vehicle to be moved safely to a place where the driver is permitted to park the vehicle under the Australian Road Rules; or
- (c) the driver stops at a particular place, or in a particular way, to deal with a medical or other emergency, and the driver stops for no longer than is necessary in the circumstances; or
- (d) the driver stops at a particular place, or in a particular way, because the condition of the driver, a passenger, or the driver's vehicle makes it necessary for the driver to stop in the interests of safety, and the driver stops for no longer than is necessary in the circumstances; or

- (e) the driver stops at a particular place, or in a particular way, to comply with another provision of the Australian Road Rules or a provision of another law, and the driver stops for no longer than is necessary to comply with the other provision.

Example for paragraph (e)

If a driver stops at an intersection at a stop line, *stop sign*, or traffic lights, or to give way to a vehicle, in accordance with the Australian Road Rules, the driver does not contravene rule 170 (stopping in or near an intersection).

Note **Driver's vehicle** is defined in the dictionary.

166 Application of Part to bicycles

This Part does not apply to a bicycle that is parked at a bicycle rail or in a bicycle rack.

Note **Bicycle** is defined in the dictionary.

Rule 167

Division 2 No stopping and no parking signs and road markings

Note 1 *Area*, *length* of road, *park* and *stop* are defined in the dictionary.

Note 2 Rule 165 provides defences to the prosecution of a driver for an offence against a provision of this Division.

167 No stopping signs

A driver must not stop on a length of road or in an area to which a *no stopping sign* applies.

Offence provision.

Note Another law of this jurisdiction may provide transitional arrangements dealing with *no standing signs*.

No stopping signs

No stopping sign
(for a length of road)



No stopping sign
(for an area)



Note 1 for diagrams There are a number of other permitted versions of these signs — see the diagrams in Schedule 3.

Note 2 for diagrams A *no stopping sign* may have an arrow pointing in a different direction and anything on the sign may be differently arranged — see rule 316 (4).

168 No parking signs

- (1) The driver of a vehicle must not stop on a length of road or in an area to which a *no parking sign* applies, unless the driver:
- (a) is dropping off, or picking up, passengers or goods; and
 - (b) does not leave the vehicle unattended; and
 - (c) completes the dropping off, or picking up, of the passengers or goods, and drives on, as soon as possible and, in any case, within the required time after stopping.

Offence provision.

- (2) For this rule, a driver leaves a vehicle *unattended* if the driver leaves the vehicle so the driver is over 3 metres from the closest point of the vehicle.

- (3) In this rule:

required time means:

- (a) 2 minutes; or
- (b) if information on or with the sign indicates another time — the indicated time.

Note With is defined in the dictionary.

No parking signs

No parking sign
(for a length of road)



No parking sign
(for an area)



Note 1 for diagrams There are a number of other permitted versions of each of these signs — see the diagrams in Schedule 3.

Note 2 for diagrams A *no parking sign* may have an arrow pointing in a different direction and anything on the sign may be differently arranged — see rule 316 (4).

Rule 169

169 No stopping on a road with a yellow edge line

A driver must not stop at the side of a road marked with a continuous yellow edge line.

Offence provision.

Note **Edge line** is defined in the dictionary.

Division 3 Stopping at intersections and crossings

Note 1 *Area*, *length* of road, *park* and *stop* are defined in the dictionary.

Note 2 Rule 165 provides defences to the prosecution of a driver for an offence against a provision of this Division.

170 Stopping in or near an intersection

- (1) A driver must not stop in an intersection.

Offence provision.

Note *Intersection* is defined in the dictionary.

- (2) A driver must not stop on a road within 20 metres from the nearest point of an intersecting road at an intersection with traffic lights, unless the driver stops at a place on a length of road, or in an area, to which a parking control sign applies and the driver is permitted to stop at that place under the Australian Road Rules.

Offence provision.

Note 1 *Parking control sign* and *traffic lights* are defined in the dictionary.

Note 2 A driver stops within a particular distance from an intersection if the driver stops so any part of the driver's vehicle is within that distance — see rule 350 (2).

- (3) A driver must not stop on a road within 10 metres from the nearest point of an intersecting road at an intersection without traffic lights, unless the driver stops:
- (a) at a place on a length of road, or in an area, to which a parking control sign applies and the driver is permitted to stop at that place under the Australian Road Rules; or
 - (b) if the intersection is a T-intersection — along the continuous side of the continuing road at the intersection.

Offence provision.

Note *Continuing road* and *T-intersection* are defined in the dictionary.

Rule 170

(4) For this rule, distances are measured in the direction in which the driver is driving, and:

- (a) for subrule (2) — as shown in example 1; or
- (b) for subrule (3) — as shown in example 2.

(5) In this rule:

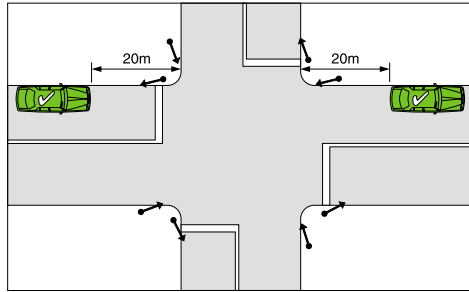
road does not include a road-related area, but includes any shoulder of the road.

Note **Road-related area** is defined in rule 13, and **shoulder** is defined in rule 12.

Examples

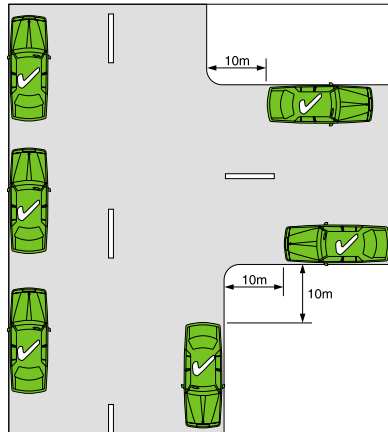
Example 1

Measurement of distance — intersection with traffic lights



Example 2

Measurement of distance — T-intersection without traffic lights



171 Stopping on or near a children's crossing

- (1) A driver must not stop on a children's crossing, or on the road within 20 metres before the crossing and 10 metres after the crossing, unless the driver stops at a place on a length of road, or in an area, to which a parking control sign applies and the driver is permitted to stop at that place under the Australian Road Rules.

Offence provision.

Note 1 **Children's crossing** is defined in rule 80, and **parking control sign** is defined in the dictionary.

Note 2 A driver stops within a particular distance from a children's crossing if the driver stops so any part of the driver's vehicle is within that distance — see rule 350 (2).

- (2) For this rule, distances are measured:
(a) in the direction in which the driver is driving; and
(b) as shown in example 1 or 2.

- (3) In this rule:

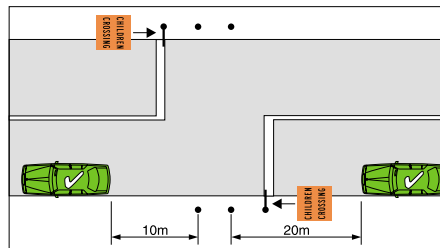
road does not include a road-related area, but includes any shoulder of the road.

Note **Road-related area** is defined in rule 13, and **shoulder** is defined in rule 12.

Examples

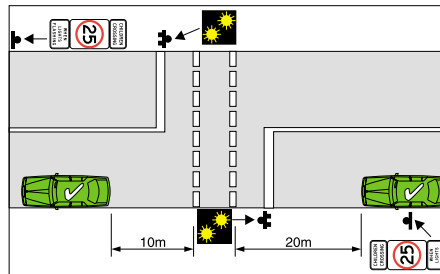
Example 1

Measurement of distance — children's crossing with red and white posts



Rule 172

Example 2
Measurement of distance — children's crossing with
2 parallel continuous or broken lines



172 Stopping on or near a pedestrian crossing (except at an intersection)

- (1) A driver must not stop on a pedestrian crossing that is not at an intersection, or on the road within 20 metres before the crossing and 10 metres after the crossing, unless the driver stops at a place on a length of road, or in an area, to which a parking control sign applies and the driver is permitted to stop at that place under the Australian Road Rules.

Offence provision.

Note 1 **Intersection** and **parking control sign** are defined in the dictionary, and **pedestrian crossing** is defined in rule 81.

Note 2 A driver stops within a particular distance from a crossing if the driver stops so any part of the driver's vehicle is within that distance — see rule 350 (2).

- (2) For this rule, distances are measured:
 - (a) in the direction in which the driver is driving; and
 - (b) as shown in the example.

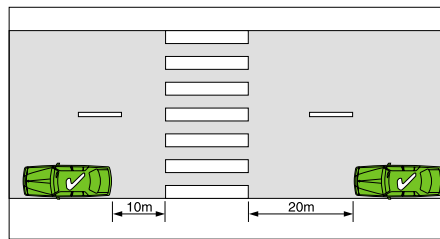
- (3) In this rule:

road does not include a road-related area, but includes any shoulder of the road.

Note **Road-related area** is defined in rule 13, and **shoulder** is defined in rule 12.

Example

Measurement of distance — pedestrian crossing



173 Stopping on or near a marked foot crossing (except at an intersection)

- (1) A driver must not stop on a marked foot crossing that is not at an intersection, or on the road within 10 metres before the traffic lights pole nearest to the driver at the crossing and 3 metres after the crossing, unless the driver stops at a place on a length of road, or in an area, to which a parking control sign applies and the driver is permitted to stop at that place under the Australian Road Rules.

Offence provision.

Note 1 **Intersection**, **marked foot crossing**, **parking control sign** and **traffic lights pole** are defined in the dictionary.

Note 2 A driver stops within a particular distance from a traffic lights pole or a crossing if the driver stops so any part of the driver's vehicle is within that distance — see rule 350 (2).

- (2) For this rule, distances are measured:
 - (a) in the direction in which the driver is driving; and
 - (b) as shown in the example.

- (3) In this rule:

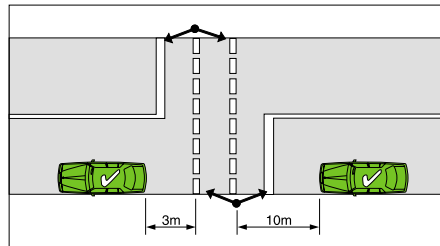
road does not include a road-related area, but includes any shoulder of the road.

Note **Road-related area** is defined in rule 13, and **shoulder** is defined in rule 12.

Rule 174

Example

Measurement of distance — marked foot crossing



174 Stopping at or near bicycle crossing lights (except at an intersection)

- (1) This rule applies to a place on a road:
 - (a) with bicycle crossing lights facing bicycle riders crossing the road; and
 - (b) with traffic lights facing traffic travelling on the road; and
 - (c) that is not at an intersection.

Note **Bicycle crossing lights**, **intersection** and **traffic lights** are defined in the dictionary.

- (2) A driver must not stop within 10 metres before the traffic lights nearest to the driver at the place, and 3 metres after the traffic lights, unless the driver stops at a place on a length of road, or in an area, to which a parking control sign applies and the driver is permitted to stop at that place under the Australian Road Rules.

Offence provision.

Note 1 **Parking control sign** is defined in the dictionary.

Note 2 A driver stops within a particular distance from traffic lights if the driver stops so any part of the driver's vehicle is within that distance — see rule 350 (2).

- (3) For this rule, distances are measured:
 - (a) in the direction in which the driver is driving; and
 - (b) as shown in the example.

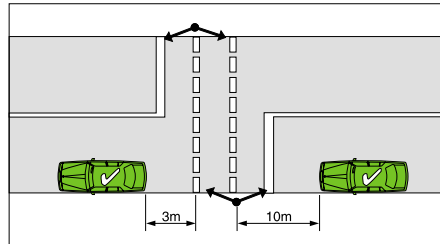
- (4) In this rule:

road does not include a road-related area, but includes any shoulder of the road.

Note **Road-related area** is defined in rule 13, and **shoulder** is defined in rule 12.

Example

Measurement of distance — bicycle crossing lights



175 Stopping on or near a level crossing

- (1) A driver must not stop on a level crossing, or on a road within 20 metres before the nearest rail or track to the driver approaching the crossing and 20 metres after the nearest rail or track to the driver leaving the crossing, unless the driver stops at a place on a length of road, or in an area, to which a parking control sign applies and the driver is permitted to stop at that place under the Australian Road Rules.

Offence provision.

Note 1 **Level crossing** is defined in rule 120, and **parking control sign** is defined in the dictionary.

Note 2 A driver stops within a particular distance from a level crossing if the driver stops so any part of the driver's vehicle is within that distance — see rule 350 (2).

- (2) For this rule, distances are measured as shown in the example.

Rule 175

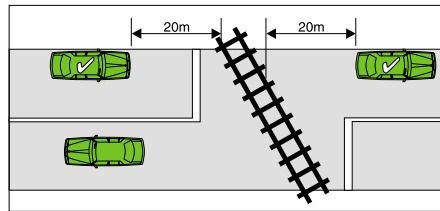
(3) In this rule:

road does not include a road-related area, but includes any shoulder of the road.

Note **Road-related area** is defined in rule 13, and **shoulder** is defined in rule 12.

Example

Measurement of distance — level crossing



Division 4 Stopping on clearways and freeways and in emergency stopping lanes

Note 1 *Area*, *length* of road, *park* and *stop* are defined in the dictionary.

Note 2 Rule 165 provides defences to the prosecution of a driver for an offence against a provision of this Division.

176 Stopping on a clearway

- (1) A driver must not stop on a length of road to which a *clearway sign* applies, unless subrule (2) or (3) applies to the driver.

Offence provision.

- (2) The driver of a public bus or public minibus may stop on the length of road if the driver is dropping off, or picking up, passengers.

Note *Public bus* and *public minibus* are defined in the dictionary.

- (3) The driver of a taxi may stop on the length of road if:
- (a) the driver is dropping off, or picking up, passengers; and
 - (b) there is not another law of this jurisdiction prohibiting the driver of a taxi from stopping on a length of road to which a *clearway sign* applies.

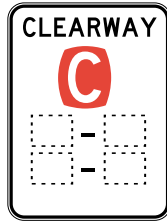
Note *Taxi* is defined in the dictionary.

- (4) If a *clearway sign* on a road indicates the days or times when it applies, the sign applies to the length of road beginning at the sign and ending at the nearer of the following:
- (a) a *clearway sign* on the road that indicates different days or times;
 - (b) an *end clearway sign* on the road.

Rule 177

- (5) If a *clearway sign* on a road does not indicate the days or times when it applies, the sign applies to the length of road beginning at the sign and ending at the nearer of the following:
- (a) a *clearway sign* on the road that indicates the days or times when it applies;
 - (b) an *end clearway sign* on the road.

Clearway sign



End clearway sign



Note for diagrams Anything on these signs may be differently arranged — see rule 316 (4).

177 Stopping on a freeway

- (1) A driver must not stop on a freeway unless:
- (a) the driver stops in an emergency stopping lane; or
 - (b) the driver's vehicle is permitted to stop on the freeway under another law of this jurisdiction.

Offence provision.

Note 1 *Driver's vehicle* is defined in the dictionary, and *emergency stopping lane* is defined in rule 95.

Note 2 Rule 178 sets out when a driver can stop in an emergency stopping lane.

- (2) A *freeway* is a length of road to which a *freeway sign* applies.
- (3) A *freeway sign* on a road applies to a length of road beginning at the sign (including any road into which the length of road merges) and ending at the next *end freeway sign* on the road.

Freeway signs



End freeway sign



Note for diagrams There are a number of other permitted versions of each of these signs — see the diagrams in Schedule 3.

178 Stopping in an emergency stopping lane

A driver (except the rider of a bicycle) must not stop in an emergency stopping lane unless:

- (a) the condition of the driver, a passenger or the driver's vehicle, or any other factor, makes it necessary or desirable for the driver to stop in the emergency stopping lane in the interests of safety, and the driver stops for no longer than is necessary in the circumstances; or
- (b) the driver is permitted to stop in the emergency stopping lane under another law of this jurisdiction.

Offence provision.

Note **Bicycle** and **driver's vehicle** are defined in the dictionary, and **emergency stopping lane** is defined in rule 95.

Rule 179

Division 5 Stopping in zones for particular vehicles

Note 1 **Area**, **length** of road, **park** and **stop** are defined in the dictionary.

Note 2 Rule 165 provides defences to the prosecution of a driver for an offence against a provision of this Division.

Note 3 The signs mentioned in this Division are particular types of **parking control sign** (defined in the dictionary) to which the general rules about the application of parking control signs apply — see rules 332 to 335.

179 Stopping in a loading zone

- (1) A driver must not stop in a loading zone unless the driver is driving:
 - (a) a public bus that is dropping off, or picking up, passengers; or
 - (b) a truck that is dropping off, or picking up, goods; or
 - (c) a vehicle that is permitted to stop in the loading zone under another law of this jurisdiction.

Offence provision.

Note **Public bus** and **truck** are defined in the dictionary.

- (2) A driver who is permitted to stop in a loading zone must not stay continuously in the zone for longer than:
 - (a) 30 minutes; or
 - (b) if information on or with the *loading zone signs* applying to the loading zone indicates another time — the indicated time.

Offence provision.

Note **With** is defined in the dictionary.

- (3) A **loading zone** is a length of a road to which a *loading zone sign* applies.

Loading zone sign



Note 1 for diagram There are a number of other permitted versions of this sign — see the diagrams in Schedule 3.

Note 2 for diagram A *loading zone sign* may have an arrow pointing in a different direction and anything on the sign may be differently arranged — see rule 316 (4).

180 Stopping in a truck zone

- (1) A driver must not stop in a truck zone unless the driver is driving:
- (a) a truck that is dropping off, or picking up, goods; or
 - (b) a vehicle that is permitted to stop in the truck zone under another law of this jurisdiction.

Offence provision.

Note **Truck** is defined in the dictionary.

Rule 181

- (2) A *truck zone* is a length of a road to which a *truck zone sign* applies.

Truck zone sign



Note 1 for diagram There is another permitted version of this sign — see the diagram in Schedule 3.

Note 2 for diagram A *truck zone sign* may have an arrow pointing in a different direction and anything on the sign may be differently arranged — see rule 316 (4).

181 Stopping in a works zone

- (1) A driver must not stop in a works zone unless the driver is driving a vehicle that is:
- (a) engaged in construction work in or near the zone; or
 - (b) permitted to stop in the works zone under another law of this jurisdiction.

Offence provision.

- (2) A **works zone** is a length of a road to which a *works zone sign* applies.

Works zone sign



Note 1 for diagram There is another permitted version of this sign — see the diagram in Schedule 3.

Note 2 for diagram A *works zone sign* may have an arrow pointing in a different direction and anything on the sign may be differently arranged — see rule 316 (4).

182 Stopping in a taxi zone

- (1) A driver must not stop in a taxi zone, unless the driver is driving a taxi.

Offence provision.

Note **Taxi** is defined in the dictionary.

- (2) A **taxi zone** is a length of a road to which a *taxi zone sign* applies.

Taxi zone sign



Note 1 for diagram There are a number of other permitted versions of this sign — see the diagrams in Schedule 3.

Note 2 for diagram A *taxi zone sign* may have an arrow pointing in a different direction and anything on the sign may be differently arranged — see rule 316 (4).

Rule 183

183 Stopping in a bus zone

- (1) A driver must not stop in a bus zone unless the driver is driving a public bus (except a public bus of a kind that is not permitted to stop in the bus zone by information on or with the *bus zone sign* applying to the bus zone).

Offence provision.

Note **Public bus** and **with** are defined in the dictionary.

- (2) A **bus zone** is a length of a road to which a *bus zone sign* applies.

Bus zone sign



Note 1 for diagram There are a number of other permitted versions of this sign — see the diagrams in Schedule 3.

Note 2 for diagram A *bus zone sign* may have an arrow pointing in a different direction and anything on the sign may be differently arranged — see rule 316 (4).

184 Stopping in a minibus zone

- (1) A driver (except the driver of a public minibus) must not stop in a minibus zone.

Offence provision.

Note **Public minibus** is defined in the dictionary.

- (2) A **minibus zone** is a length of road to which a *minibus zone sign* applies.

Minibus zone sign



Note for diagram A *minibus zone sign* may have an arrow pointing in a different direction and anything on the sign may be differently arranged — see rule 316 (4).

185 Stopping in a permit zone

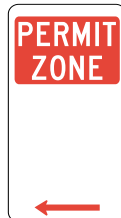
- (1) A driver must not stop in a permit zone unless the driver's vehicle displays a current permit issued under another law of this jurisdiction that permits the vehicle to stop in the zone.

Offence provision.

Note **Driver's vehicle** is defined in the dictionary.

- (2) A **permit zone** is a length of a road to which a *permit zone sign* applies.

Permit zone sign



Note 1 for diagram There are a number of other permitted versions of this sign — see the diagrams in Schedule 3.

Note 2 for diagram A *permit zone sign* may have an arrow pointing in a different direction and anything on the sign may be differently arranged — see rule 316 (4).

Rule 186

186 Stopping in a mail zone

- (1) A driver must not stop in a mail zone.

Offence provision.

- (2) A *mail zone* is a length of a road to which a *mail zone sign* applies.

Note Exemptions for drivers of postal vehicles may be provided under rule 313.

Mail zone sign



Note for diagram A *mail zone sign* may have an arrow pointing in a different direction and anything on the sign may be differently arranged — see rule 316 (4).

Division 6 Other places where stopping is restricted

Note 1 *Area, length* of road, *park* and *stop* are defined in the dictionary.

Note 2 Rule 165 provides defences to the prosecution of a driver for an offence against a provision of this Division.

187 Stopping in a bicycle lane, bus lane, tram lane, transit lane, truck lane or on tram tracks

- (1) A driver must not stop in a bus lane, transit lane or truck lane unless the driver:
- (a) is driving a public bus, public minibus or taxi, and is dropping off or picking up, passengers; and
 - (b) is permitted to drive in the lane under the Australian Road Rules or another law of this jurisdiction.

Offence provision.

- (2) A driver must not stop in a bicycle lane unless:
- (a) the driver:
 - (i) is driving a public bus, public minibus or taxi, and is dropping off or picking up, passengers; and
 - (ii) is permitted to drive in the lane under the Australian Road Rules or another law of this jurisdiction; or
 - (b) the driver is permitted to stop or park in the bicycle lane under another law of this jurisdiction.

Offence provision.

- (3) A driver (except the driver of a tram or a public bus) must not stop in a tram lane, or on tram tracks.

Offence provision.

Note 1 *Bicycle lane* is defined in rule 153, *bus lane* is defined in rule 154, *tram lane* is defined in rule 155, *transit lane* is defined in rule 156, *truck lane* is defined in rule 157, and *public bus, public minibus, taxi, tram* and *tram tracks* are defined in the dictionary.

Rule 188

Note 2 Rule 76 deals with drivers keeping clear of trams travelling in tram lanes or on tram tracks marked on each side by a yellow line.

Note 3 Part 11, Division 6 deals with driving in bicycle lanes, bus lanes, tram lanes, transit lanes and truck lanes.

188 Stopping in a shared zone

A driver must not stop in a shared zone unless:

- (a) the driver stops at a place on a length of road, or in an area, to which a parking control sign applies and the driver is permitted to stop at that place under the Australian Road Rules; or
- (b) the driver stops in a parking bay and the driver is permitted to stop in the parking bay under the Australian Road Rules; or
- (c) the driver is dropping off, or picking up, passengers or goods; or
- (d) the driver is engaged in the door-to-door delivery or collection of goods, or in the collection of waste or garbage.

Offence provision.

Note **Parking bay** and **parking control sign** are defined in the dictionary, and **shared zone** is defined in rule 24.

189 Double parking

- (1) A driver must not stop on a road:
 - (a) if the road is a two-way road — between the centre of the road and another vehicle that is parked at the side of the road; or
 - (b) if the road is a one-way road — between the far side of the road and another vehicle that is parked at the side of the road.

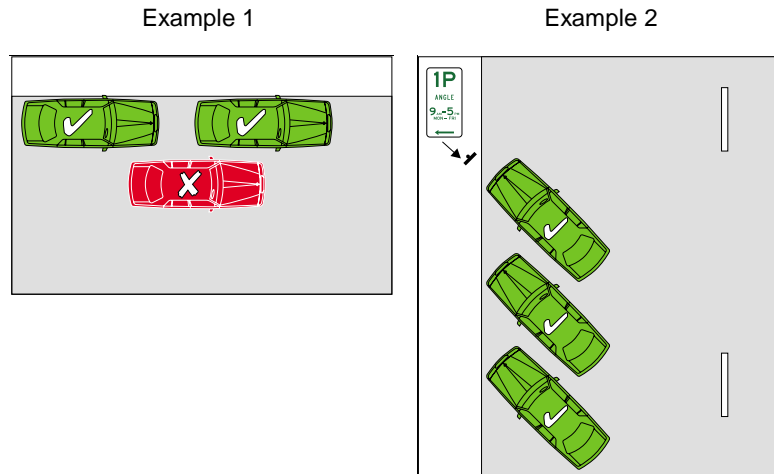
Offence provision.

Note **One-way road** and **two-way road** are defined in the dictionary.

- (2) A driver does not contravene this rule by parking on the side of the road, or in a median strip parking area, in accordance with rule 210.

Note **Median strip parking area** is defined in the dictionary.

Examples



In example 1, the vehicle marked with an 'X' is stopped in contravention of this rule.

In example 2, the angle parked vehicles are not stopped in contravention of this rule.

190 Stopping in or near a safety zone

- (1) A driver must not stop in a safety zone, or on a road within 10 metres before or after a safety zone, unless the driver stops at a place on a length of road, or in an area, to which a parking control sign applies and the driver is permitted to stop at that place under the Australian Road Rules.

Offence provision.

Note 1 **Parking control sign** is defined in the dictionary, and **safety zone** is defined in rule 162.

Note 2 A driver stops within a particular distance before or after something if the driver stops so any part of the vehicle is within that distance — see rule 350 (2).

Rule 191

- (2) For this rule, distances are measured:
- (a) in the direction in which the driver is driving; and
 - (b) from the end of the structure; and
 - (c) as shown in the example.

- (3) In this rule:

road does not include a road-related area, but includes any shoulder of the road.

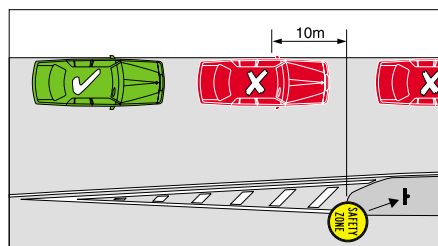
Note **Road-related area** is defined in rule 13, and **shoulder** is defined in rule 12.

Safety zone sign



Example

Measurement of distance — safety zone



In the example, the vehicles marked with an 'X' are stopped in contravention of this rule.

191 Stopping near an obstruction

A driver must not stop on a road near an obstruction on the road in a position that obstructs traffic on the road.

Offence provision.

Note **Obstruction** is defined in the dictionary.

192 Stopping on a bridge or in a tunnel etc

- (1) A driver must not stop on a bridge, causeway, ramp or similar structure unless:
- (a) the road is at least as wide on the structure as it is on each of the approaches; or
 - (b) the driver stops at a place on a length of road, or in an area, to which a parking control sign applies and the driver is permitted to stop at that place under the Australian Road Rules.

Offence provision.

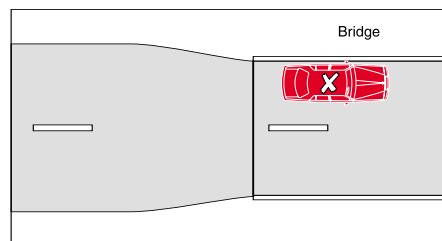
Note **Parking control sign** is defined in the dictionary.

- (2) A driver must not stop in a tunnel or underpass unless:
- (a) the road is at least as wide in the tunnel or underpass as it is on each of the approaches; or
 - (b) the driver stops at a place on a length of road, or in an area, to which a parking control sign applies and the driver is permitted to stop at that place under the Australian Road Rules.

Offence provision.

Example

Stopping on a bridge where the road on the bridge is narrower than on an approach



In the example, the vehicle is stopped in contravention of subrule (1).

Rule 193

193 Stopping on a crest or curve outside a built-up area

- (1) A driver must not stop on or near a crest or curve on a length of road that is not in a built-up area unless:
- (a) the driver's vehicle is visible for 100 metres to drivers approaching the vehicle and travelling in the direction of travel of traffic on the same side of the road as the vehicle; or
 - (b) the driver stops at a place on a length of road, or in an area, to which a parking control sign applies and the driver is permitted to stop at that place under the Australian Road Rules.

Offence provision.

Note **Built-up area**, **driver's vehicle** and **parking control sign** are defined in the dictionary.

- (2) In this rule:

road does not include a road-related area, but includes any shoulder of the road.

Note **Road-related area** is defined in rule 13, and **shoulder** is defined in rule 12.

194 Stopping near a fire hydrant etc

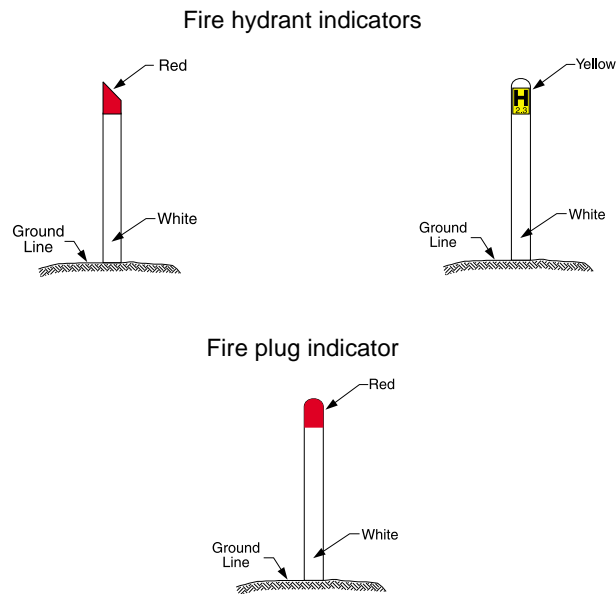
- (1) A driver must not stop within 1 metre of a fire hydrant, fire hydrant indicator, or fire plug indicator, unless:
- (a) the driver is driving a public bus, and the driver stops at a bus stop or in a bus zone and does not leave the bus unattended; or
 - (b) the driver is driving a taxi, and the driver stops in a taxi zone and does not leave the taxi unattended; or
 - (c) the driver is driving a public minibus, and the driver stops in a minibus zone and does not leave the minibus unattended.

Offence provision.

Note **Bus zone** is defined in rule 183, **public bus**, **public minibus** and **taxi** are defined in the dictionary, **minibus zone** is defined in rule 184, and **taxi zone** is defined in rule 182.

- (2) For this rule, a driver leaves a vehicle *unattended* if the driver leaves the vehicle so the driver is over 3 metres from the closest point of the vehicle.
- (3) In this rule:
fire hydrant means an upright pipe with a spout, nozzle or other outlet for drawing water from a main or service pipe in case of fire or other emergency.

Examples



195 Stopping at or near a bus stop

- (1) A driver (except the driver of a public bus) must not stop at a bus stop, or on the road, within 20 metres before a sign on the road that indicates the bus stop, and 10 metres after the sign, unless the driver stops at a place on a length of road, or in an area, to which a parking control sign applies and the driver is permitted to stop at that place under the Australian Road Rules.

Offence provision.

Note 1 *Parking control sign* and *public bus* are defined in the dictionary.

Rule 196

Note 2 A driver stops within a particular distance before or after a sign indicating a bus stop if the driver stops so any part of the driver's vehicle is within that distance — see rule 350 (2).

- (2) For this rule, distances are measured in the direction in which the driver is driving.
- (3) In this rule:

road does not include a road-related area, but includes any shoulder of the road.

Note **Road-related area** is defined in rule 13, and **shoulder** is defined in rule 12.

196 Stopping at or near a tram stop

- (1) A driver (except the driver of a tram or a public bus travelling along tram tracks) must not stop at a tram stop or on the road within 10 metres before a sign on the road displaying the words 'tram stop' or 'tram stop request'.

Offence provision.

Note 1 **Public bus**, **tram** and **travelling along tram tracks** are defined in the dictionary.

Note 2 A driver stops within a particular distance before a sign indicating a tram stop if the driver stops so any part of the driver's vehicle is within that distance — see rule 350 (2).

- (2) For this rule, the distance is measured in the direction in which the driver is driving.
- (3) In this rule:

road does not include a road-related area, but includes any shoulder of the road.

Note **Road-related area** is defined in rule 13, and **shoulder** is defined in rule 12.

197 Stopping on a path, dividing strip or nature strip

- (1) A driver must not stop on a bicycle path, footpath, shared path or dividing strip, or a nature strip adjacent to a length of road in a built-up area, unless:
 - (a) the driver stops at a place on a length of road, or in an area, to which a parking control sign applies and the driver is permitted to stop at that place under the Australian Road Rules; or
 - (b) the driver is permitted to stop under another law of this jurisdiction.

Offence provision.

Note 1 **Bicycle path** is defined in rule 239, **built-up area**, **dividing strip**, **footpath**, **nature strip** and **parking control sign** are defined in the dictionary, and **shared path** is defined in rule 242.

Note 2 A **separated footpath** is a particular kind of footpath — see rule 239.

- (2) This rule does not apply to the rider of a bicycle or animal.

Note **Bicycle** is defined in the dictionary.

198 Obstructing access to and from a footpath, driveway etc

- (1) A driver must not stop on a road in a position that obstructs access by vehicles or pedestrians to or from a footpath ramp or a similar way of access to a footpath, or a bicycle path or passageway unless:
 - (a) the driver is driving a public bus that is dropping off, or picking up, passengers; or
 - (b) the driver stops in a parking bay and the driver is permitted to stop in the parking bay under the Australian Road Rules.

Offence provision.

Note **Bicycle path** is defined in rule 239, and **footpath**, **parking bay** and **public bus** are defined in the dictionary.

Rule 199

- (2) A driver must not stop on or across a driveway or other way of access for vehicles travelling to or from adjacent land unless:
- (a) the driver is dropping off, or picking up, passengers; or
 - (b) the driver stops in a parking bay and the driver is permitted to stop in the parking bay under the Australian Road Rules.

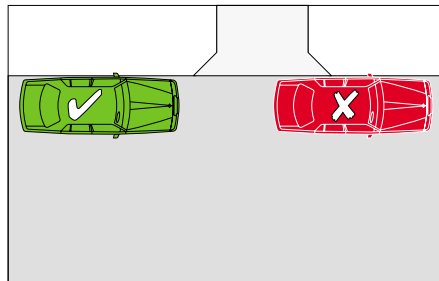
Offence provision.

Note 1 **Adjacent land** is defined in the dictionary.

Note 2 A driver stops on or across a driveway or way of access if any part of the vehicle is on or across the driveway or way of access — see rule 350.

Example

Blocking a driveway



In the example, the vehicle marked with an 'X' is stopped in contravention of subrule (2).

199 Stopping near a postbox

- (1) A driver must not stop on a road within 3 metres of a public postbox, unless the driver:
- (a) is dropping off, or picking up, passengers or mail; or
 - (b) stops at a place on a length of road, or in an area, to which a parking control sign applies and the driver is permitted to stop at that place under the Australian Road Rules.

Offence provision.

Note **Parking control sign** is defined in the dictionary.

- (2) In this rule:

public postbox means a structure that is declared to be a public postbox, for the Australian Road Rules, under another law of this jurisdiction.

200 Stopping on roads — heavy and long vehicles

- (1) The driver of a heavy vehicle, or long vehicle, must not stop on a length of road that is not in a built-up area, except on the shoulder of the road.

Offence provision.

Note **Built-up area** is defined in the dictionary, and **shoulder** is defined in rule 12.

- (2) The driver of a heavy vehicle, or long vehicle, must not stop on a length of road in a built-up area for longer than 1 hour, unless the driver is permitted to stop on the length of road for longer than 1 hour by information on or with a traffic control device, or under another law of this jurisdiction.

Offence provision.

Note **Traffic control device** and **with** are defined in the dictionary.

- (3) In this rule:

heavy vehicle means a vehicle with a GVM of 4.5 tonnes or more.

long vehicle means a vehicle that, together with any load or projection, is 7.5 metres long, or longer.

road does not include a road-related area, but includes any shoulder of the road.

Note 1 **GVM** is defined in the dictionary, **road-related area** is defined in rule 13, and **shoulder** is defined in rule 12.

Note 2 **Vehicle** includes a combination — see rule 15 (d).

Rule 201

201 Stopping on a road with bicycle parking sign

A driver (except the rider of a bicycle) must not stop on a length of road to which a *bicycle parking sign* applies, unless the driver is dropping off, or picking up, passengers.

Offence provision.

Note **Bicycle** is defined in the dictionary.

Bicycle parking sign



Note for diagram Anything on this sign may be differently arranged — see rule 316 (4).

202 Stopping on a road with motor bike parking sign

A driver (except the rider of a motor bike) must not stop on a length of road to which a *motor bike parking sign* applies, unless the driver is dropping off, or picking up, passengers.

Offence provision.

Note **Motor bike** is defined in the dictionary.

Motor bike parking sign



Note for diagram Anything on this sign may be differently arranged — see rule 316 (4).

203 Stopping in a parking area for people with disabilities

- (1) A driver must not stop in a parking area for people with disabilities unless:
- (a) the driver's vehicle displays a current parking permit for people with disabilities; and
 - (b) the driver complies with the conditions of use of the permit.

Offence provision.

Note **Driver's vehicle** and **parking permit for people with disabilities** are defined in the dictionary.

- (2) A **parking area for people with disabilities** is a length or area of a road:
- (a) to which a *permissive parking sign* displaying a people with disabilities symbol applies; or
 - (b) to which a *people with disabilities parking sign* applies; or
 - (c) indicated by a road marking (a **people with disabilities road marking**) that consists of, or includes, a people with disabilities symbol.

People with disabilities symbols



Rule 203

Permissive parking sign displaying
a people with disabilities symbol
(for a length of road)



Permissive parking sign displaying
a people with disabilities symbol
(for an area)



People with disabilities parking sign



Note for diagrams Anything on these signs may be differently arranged — see rule 316 (4).

Division 7 Permissive parking signs and parking fees

Note 1 *Area, length* of road, *park* and *stop* are defined in the dictionary.

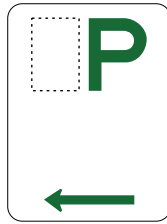
Note 2 Rule 165 provides defences to the prosecution of a driver for an offence against a provision of this Division.

204 Meaning of certain information on or with permissive parking signs

- (1) This rule explains the meaning of certain information on or with a *permissive parking sign* applying to a length of road or an area.

Note **With** is defined in the dictionary.

Permissive parking sign
(for a length of road)



Permissive parking sign
(for an area)



Permissive parking sign
(for a length of road)



Note 1 for diagrams There are a number of other permitted versions of each of these signs — see the diagrams in Schedule 3.

Note 2 for diagrams A *permissive parking sign* may have an arrow pointing in a different direction and anything on the sign may be differently arranged — see rule 316 (4).

Rule 204

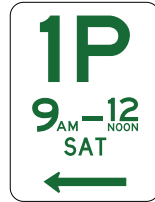
Note Rule 318 (1) and (2) deal with the effect of information on or with a traffic control device (including a *permissive parking sign*) that limits the application of the device to particular times or days. Under rule 318 (3), if the information indicates that the device applies on a particular day, for example Friday, the sign does not have effect on a Friday that is a public holiday unless otherwise stated.

- (2) A whole number, fraction, or whole number and fraction, immediately to the left of the letter ‘P’ indicates that a driver must not park on the length of road, or in the area, continuously for longer than the period of hours, or fraction of an hour, equal to the number, fraction, or number and fraction, shown.

Examples of permissive parking signs showing permitted parking periods and times of operation

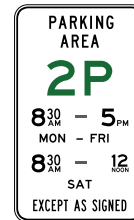
Example 1

Permissive parking sign
applying to a length of road with a
whole number to the left of P



Example 2

Permissive parking sign
applying to an area with a whole
number to the left of P



In example 1, the sign indicates that a driver must not park continuously for longer than 1 hour on Saturdays between 9 am and 12 noon.

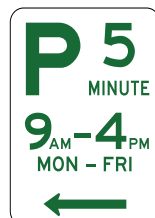
In example 2, the sign indicates that a driver must not park in the area for longer than 2 hours on Mondays to Fridays between 8.30 am and 5 pm, and on Saturdays between 8.30 am and 12 noon, unless permitted by information on or with another traffic control device.

- (3) A number, together with the word ‘minute’, immediately to the right of the letter ‘P’ indicate that a driver must not park on the length of road, or in the area, continuously for longer than the number of minutes shown.

Example

Example 3

Permissive parking sign with a number of minutes to the right of P



In this example, the sign indicates that a driver must not park continuously for longer than 5 minutes on Mondays to Fridays between 9 am and 4 pm.

- (4) The word ‘parking’, together with words indicating a number of hours or minutes, indicate that a driver must not park on the length of road, or in the area, continuously for longer than the number of hours or minutes shown.

205 Parking for longer than indicated

A driver must not park continuously on a length of road, or in an area, to which a *permissive parking sign* applies for longer than the period indicated by information on or with the sign or, if rule 206 applies to the driver, the period allowed under that rule.

Offence provision.

Note **With** is defined in the dictionary.

206 Time extension for people with disabilities

- (1) This rule applies to a driver:
- (a) if the driver’s vehicle displays a current parking permit for people with disabilities; and
 - (b) the driver complies with the conditions of use of the permit.

Note **Driver’s vehicle** and **parking permit for people with disabilities** are defined in the dictionary.

Rule 207

- (2) The driver may park continuously on a length of road, or in an area, to which a *permissive parking sign* applies (except in a parking area for people with disabilities) for:
- (a) twice the period indicated on the sign; or
 - (b) if another law of this jurisdiction permits the driver to park for a longer period — the longer period; or
 - (c) if another law of this jurisdiction permits the driver to park for an unlimited period — an unlimited period.

Note **Parking area for people with disabilities** is defined in rule 203.

207 Parking where fees are payable

- (1) This rule applies to a driver who parks on a length of road, or in an area, to which a *permissive parking sign* applies if information on or with the sign indicates that a fee is payable for parking by buying a ticket or putting money into a parking meter.

Note **With** is defined in the dictionary.

- (2) The driver must:
- (a) pay the fee (if any) payable under the law of this jurisdiction; and
 - (b) obey any instructions on or with the sign, meter, ticket or ticket-vending machine.

Offence provision.

Division 8 Parallel parking

Note 1 **Area**, **length** of road, **park** and **stop** are defined in the dictionary.

Note 2 Rule 165 provides defences to the prosecution of a driver for an offence against a provision of this Division.

208 Parallel parking on a road (except in a median strip parking area)

- (1) A driver who parks on a road (except in a median strip parking area) must position the driver's vehicle in accordance with subrules (2) to (8).

Offence provision.

Note **Driver's vehicle** and **median strip parking area** are defined in the dictionary.

- (2) The driver must position the vehicle to face in the direction of travel of vehicles in the marked lane or line of traffic on, or next to, the part of the road where the driver parks.

Note **Marked lane** is defined in the dictionary.

- (3) If the road is a two-way road, the driver must position the vehicle parallel, and as near as practicable, to the far left side of the road.

Note **Two-way road** is defined in the dictionary.

- (4) If the road is a one-way road, the driver must position the vehicle parallel, and as near as practicable, to the far left or far right side of the road, unless otherwise indicated by information on or with a parking control sign.

Note **One-way road**, **parking control sign** and **with** are defined in the dictionary.

- (5) If the driver does not park in a parking bay, the driver must position the vehicle at least 1 metre from the closest point of any vehicle in front of it and any vehicle behind it.

Note **Parking bay** is defined in the dictionary.

Rule 208

- (6) If the road has a continuous dividing line or a dividing strip, the driver must position the vehicle at least 3 metres from any dividing line or dividing strip, unless otherwise indicated by information on or with a parking control sign.

Note **Dividing line** and **dividing strip** are defined in the dictionary.

- (7) If the road does not have a continuous dividing line or a dividing strip, the driver must position the vehicle so there is at least 3 metres of the road alongside the vehicle that is clear for other vehicles to pass, unless otherwise indicated by information on or with a parking control sign.

- (8) The driver must position the vehicle so the vehicle does not unreasonably obstruct the path of other vehicles or pedestrians.

- (9) This rule does not apply to:

- (a) a driver if the driver parks on a length of road, or in an area, to which a parking control sign or road marking applies, and information on or with the sign or road marking includes the words 'angle parking' or 'angle'; or
- (b) the rider of a motor bike if the rider parks the motor bike on a length of road, or in an area, to which a *permissive parking sign* applies and the sign indicates that the length of road or area is for parking motor bikes.

Note 1 **Motor bike** and **road marking** are defined in the dictionary.

Note 2 Division 9 deals with angle parking.

- (10) Subrules (3) and (4) do not apply to the rider of a motor bike if the rider positions the motor bike so at least 1 wheel is as near as practicable to the far left or far right side of the road.

- (11) If a road has one or more service roads, the part of the road used by the main body of moving vehicles, and each service road, is taken to be a separate road for this rule.

Note **Part of the road used by the main body of moving vehicles** and **service road** are defined in the dictionary.

(12) In this rule:

continuous dividing line means:

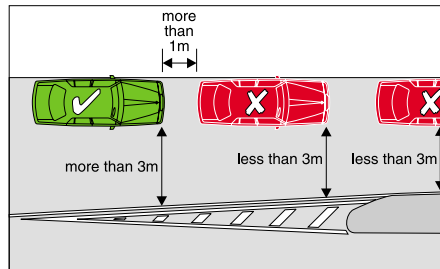
- (a) a single continuous dividing line only; or
- (b) a single continuous dividing line to the left or right of a broken dividing line; or
- (c) 2 parallel continuous dividing lines.

road does not include a road-related area, but includes any shoulder of the road.

Note **Road-related area** is defined in rule 13, and **shoulder** is defined in rule 12.

Example

Parallel parking — minimum distance from other vehicles and dividing strip



In the example, the vehicles marked with an 'X' are parked in contravention of this rule.

209 Parallel parking in a median strip parking area

- (1) This rule applies to a driver who parks in a median strip parking area if a parking control sign or road marking applies to the area, and information on or with the sign or road marking indicates that the driver's vehicle must be positioned parallel to the median strip.

Note **Driver's vehicle, median strip, median strip parking area, parking control sign, road marking** and **with** are defined in the dictionary.

Rule 209

- (2) The driver must position the driver's vehicle:
- (a) to face in the direction of travel of vehicles in the marked lane or line of traffic to the left of the driver; and
 - (b) parallel, and as near as practicable, to the centre of the median strip; and
 - (c) if the driver does not park in a parking bay — at least 1 metre from the closest point of any vehicle in front of it and any vehicle behind it.

Offence provision.

Note **Marked lane** and **parking bay** are defined in the dictionary.

- (3) This rule does not apply to the rider of a motor bike.

Note **Motor bike** is defined in the dictionary.

Division 9 Angle parking

Note 1 **Park** and **stop** are defined in the dictionary.

Note 2 Rule 165 provides defences to the prosecution of a driver for an offence against a provision of this Division.

210 Angle parking

- (1) If a driver parks in a parking area on the side of a road, or in a median strip parking area, to which a parking control sign or road marking applies, and information on or with the sign or road marking includes the words ‘angle parking’ or ‘angle’, the driver must position the driver’s vehicle in accordance with subrules (2) to (4).

Offence provision.

Note 1 **Driver’s vehicle**, **median strip parking area**, **parking area**, **parking control sign**, **road marking** and **with** are defined in the dictionary.

Note 2 Rule 212 deals with whether a driver enters a median strip parking area forwards or in reverse.

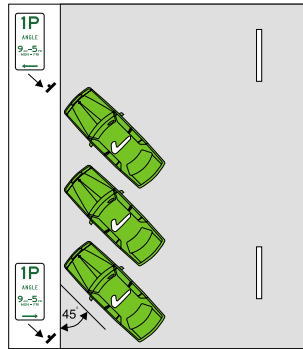
- (2) If information on or with the parking control sign or road marking indicates that the vehicle must be positioned at an angle of 45°, or does not indicate another angle, the driver must position the driver’s vehicle:
- (a) so the vehicle is at an angle as near as practicable to 45°, as shown in example 1 or 2; and
 - (b) if the vehicle is parked on the side of the road — with the rear of the vehicle nearest to traffic in the marked lane or line of traffic next to the part of the road where the driver parks.

Note **Marked lane** is defined in the dictionary.

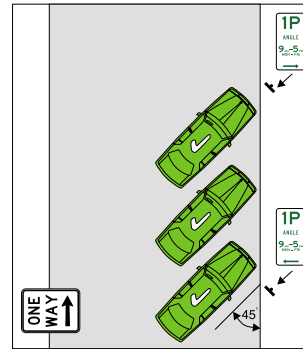
Rule 210

Examples

Example 1
Parking at 45°
at the side of a two-way road



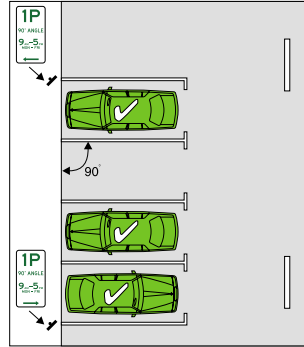
Example 2
Parking at 45°
at the right side of a one-way road



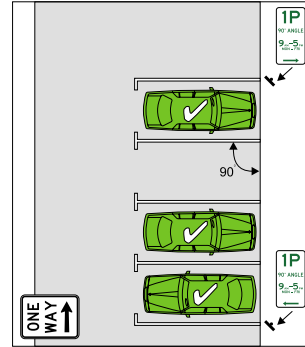
- (3) If information on or with the parking control sign or road marking indicates that the vehicle must be positioned at an angle of 90°, the driver:
- (a) must position the driver's vehicle so the vehicle is at an angle as near as practicable to 90°, as shown in example 3 or 4; and
 - (b) if the vehicle is parked on the side of the road — may position the vehicle with either the front or rear of the vehicle nearest to traffic in the marked lane or line of traffic next to the part of the road where the driver parks.

Examples

Example 3
Parking at 90°
at the side of a two-way road



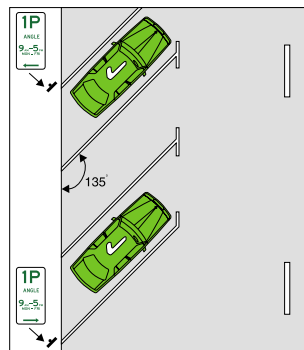
Example 4
Parking at 90°
at the right side of a one-way road



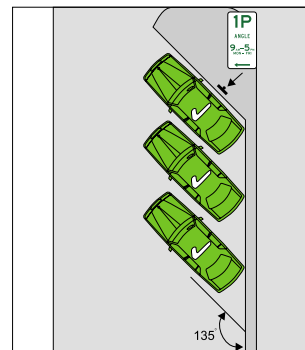
- (4) If information on or with the parking control sign or road marking indicates that the vehicle must be positioned at an angle of 135°, the driver must position the driver's vehicle:
- (a) so the vehicle is at an angle as near as practicable to 135°, as shown in example 5 or 6; and
 - (b) if the vehicle is parked on the side of the road — with the front of the vehicle nearest to traffic in the marked lane or line of traffic next to the part of the road where the driver parks.

Examples

Example 5
Parking at 135°
at the side of a road



Example 6
Parking at 135°
in a median strip parking area



Rule 210

(5) This rule does not apply to the rider of a motor bike.

Note **Motor bike** is defined in the dictionary.

Division 10 Other parking related rules

Note 1 **Area**, **length** of road, **park** and **stop** are defined in the dictionary.

Note 2 Rule 165 provides defences to the prosecution of a driver for an offence against a provision of this Division.

211 Parking in parking bays

- (1) A driver must not park on a length of road, or in an area, to which a *park in bays only sign* applies, except in a parking bay.

Offence provision.

Note **Parking bay** is defined in the dictionary.

- (2) A driver who parks in a parking bay must position the driver's vehicle completely within the bay, unless the vehicle is too wide or long to fit completely within the bay.

Offence provision.

Note 1 **Driver's vehicle** is defined in the dictionary.

Note 2 **Vehicle** includes a combination — see rule 15 (d).

- (3) If the vehicle is too wide or long to fit completely within a single parking bay, the driver must park the driver's vehicle within the minimum number of parking bays needed to park the vehicle.

Offence provision.

Park in bays only sign



Rule 212

212 Entering and leaving a median strip parking area

- (1) If information on or with a traffic control device indicates that a driver must enter or leave a median strip parking area in a particular direction, the driver must enter or leave the area in that direction.

Offence provision.

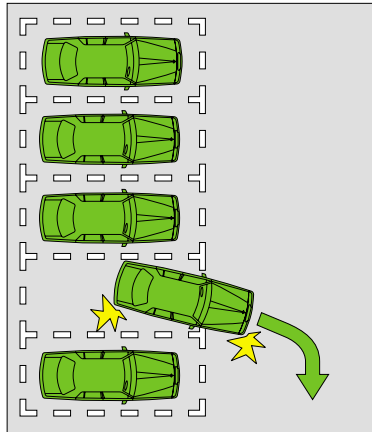
Note **Median strip parking area**, **traffic control device** and **with** are defined in the dictionary.

- (2) If there is no information on or with a traffic control device that indicates that a driver must enter or leave a median strip parking area in a particular direction, the driver must enter or leave the area by driving forward.

Offence provision.

Example

Leaving median strip parking area by driving forward



213 Making a motor vehicle secure

- (1) This rule applies to the driver of a motor vehicle who stops and leaves the vehicle on a road (except to pay a fee for parking the vehicle) so the driver is over 3 metres from the closest part of the vehicle if there is nobody 16 years old, or older, in the vehicle.

Note **Motor vehicle** is defined in the dictionary.

- (2) Before leaving the motor vehicle, the driver must comply with this rule, except so far as the driver is exempt from this rule under another law of this jurisdiction.

Offence provision.

- (3) The driver must:
- (a) switch off the engine; and
 - (b) apply the parking brake effectively or, if weather conditions (for example, snow) would prevent the effective operation of the parking brake, effectively restrain the motor vehicle's movement in another way.
- (4) If there is nobody in the motor vehicle, the driver must:
- (a) remove the ignition key; and
 - (b) if the doors of the vehicle can be locked — lock the doors.